

The Graduate School

Presentation to the Board of Governors

by Dean Ambika Mathur

December 5, 2014



Mission, Strategic Goals & Objectives

The Graduate School is a leader and advocate for graduate education and cultivates a supportive environment for research, scholarly activities and other creative endeavors that are integral to successful graduate students and faculty members. The Graduate School's objectives are to:

- Improve recruitment, retention, and graduation
- Foster and improve diversity on campus
- Enrich student research training experiences
- Encourage curriculum innovation
- Strengthen student-faculty relationships
- Connect students to careers/multiple career opportunities
- Engage students in professional development



We Provide Services for Students and Faculty in:

12 Schools/Colleges in 238 graduate programs

- 59 Doctoral
- 124 Master's
- 55 Graduate Certificates



For Graduate Students

- Admissions, Funding, Advocacy
- New Programs and Proposals
- Academic Standards
- Career Services & Career Pathways
- Professional & Academic Development
- Fellowships, Assistantships, Scholarships
- External Research Training Grants and Fellowships
- GEOC-AFT interactions



For Faculty

(844 Graduate Faculty)

- Graduate Faculty appointments
- Tuition reimbursement for students appointed to research grants
- Graduate Teaching and Mentoring awards



Fall 2014 Graduate Enrollment

Total WSU graduate student enrollment
decreased by **0.2%**

*(Council of Graduate Schools reported national
enrollment decrease of **0.2%**)*



Graduate School

But New Student Enrollment Increased!

New WSU graduate student enrollment
increased by 8%

*(Council of Graduate Schools reported national
enrollment increase of **only 1%**)*



Fall 2014 Graduate Enrollment

7201 Total Graduate Students

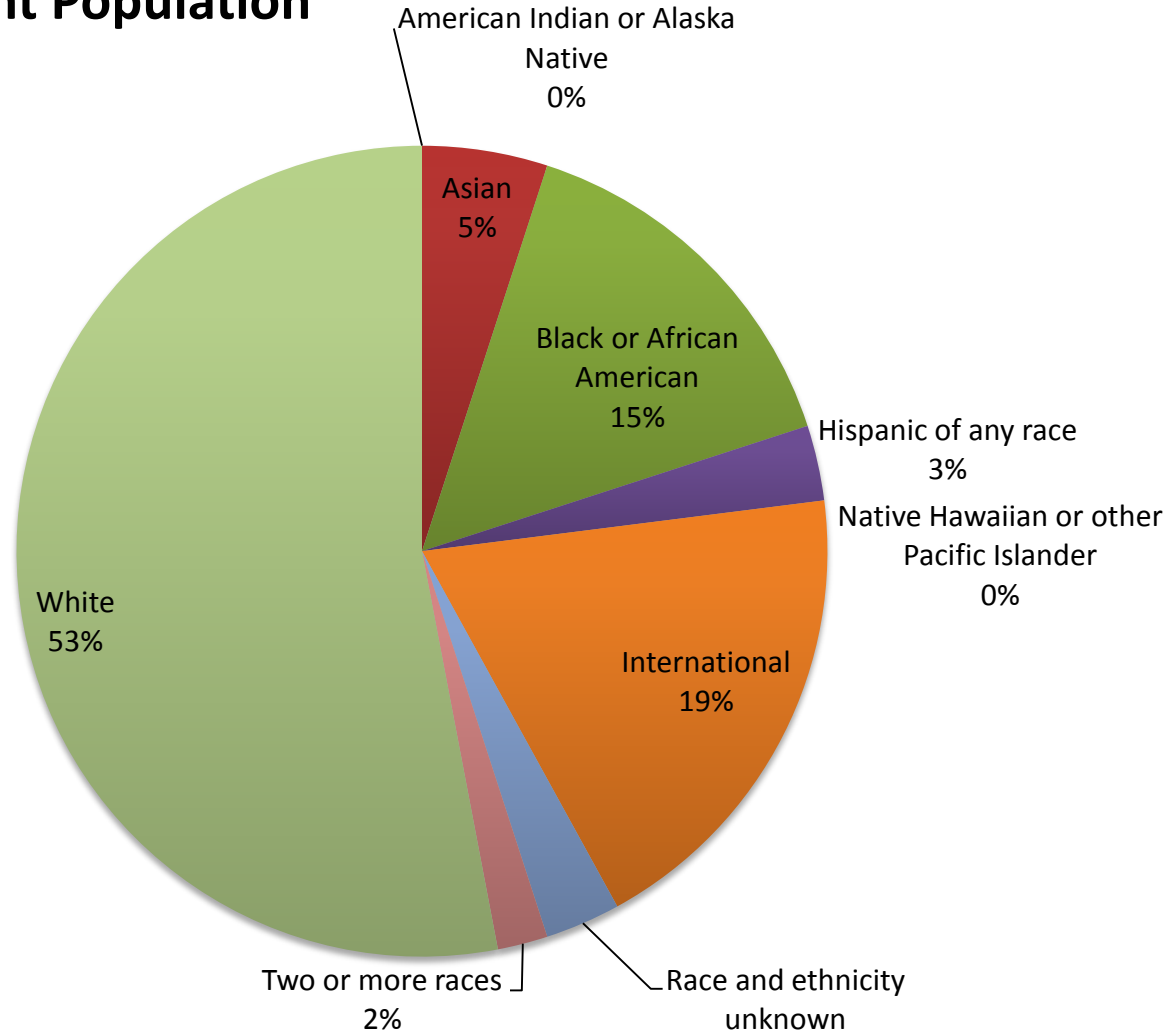
- 1800 Doctorate | 4995 Master's | 406 Certificate and Non-degree
- 5497 Continuing | 1704 new
- 4305 female | 2896 male



Graduate School

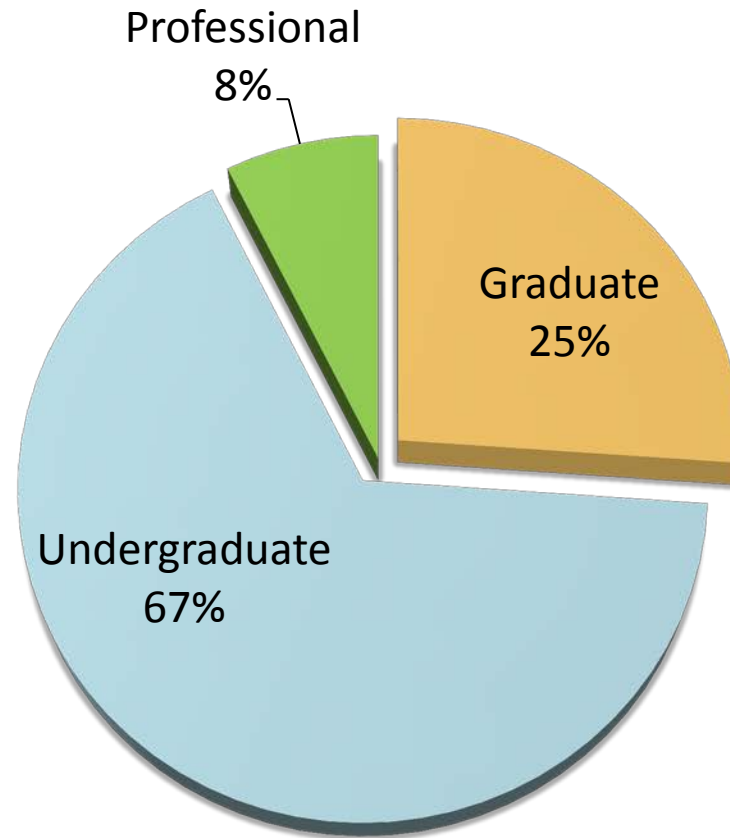
Fall 2014 Graduate Student Enrollment

2014 Graduate Student Population



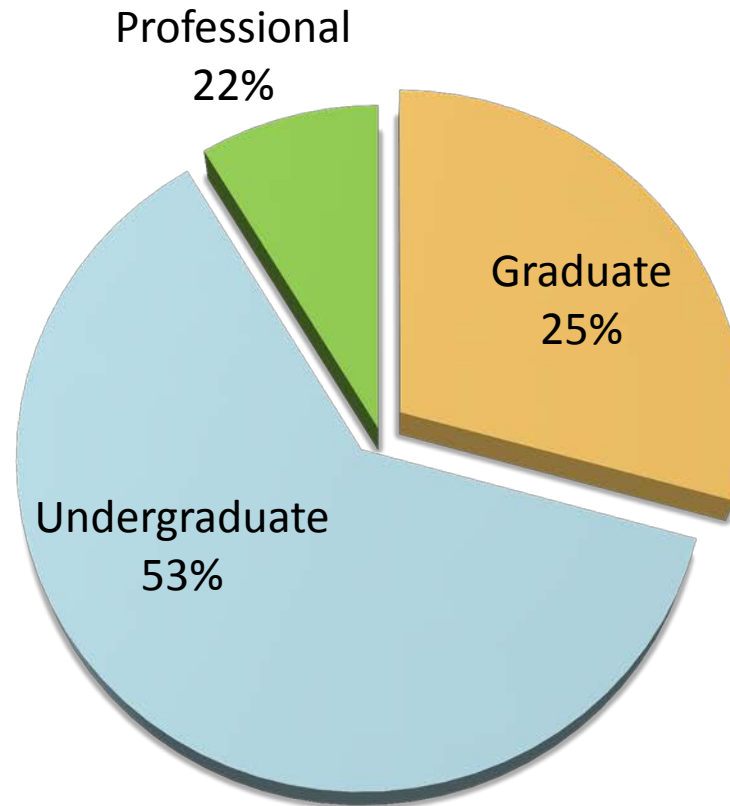
Graduate Students constitute 25% of WSU student population

WSU Student Population



Graduate Tuition constitutes 25% of WSU Tuition Revenue

Tuition Revenue



- Master's Students
 - ❖ Recruitment of new students in certain schools, colleges and programs
 - ❖ Retention of continuing students
 - ❖ Financial Aid
 - ❖ Programs (innovation)

- Doctoral Students
 - ❖ Financial Aid (GTAs, GRAs, GSAs)
 - ❖ WSU reputation for graduate research training

- Cost of non-resident tuition for Master's and Doctoral Students

- Faculty research funding



Addressing Challenges: *Graduate School Investment for Financial Aid & Programs*

➤ **Master's Students**

- ❖ *Financial Aid:* Strategic Tuition Scholarships for recruitment of new and retention of continuing students (\$750,000)
- ❖ *Programs:* Funds for Master's Program Innovation (\$750,000)
- ❖ *Non-resident tuition:* Funds for Master's and Doctoral GTAs, GRAs, GSAs

➤ **Doctoral Students**

- ❖ *Financial Aid:* Funds one-time competitive GRA support (\$750,000)
- ❖ *Reputation:* External grants to enhance reputation of graduate research training (\$23 million in new awards)



Addressing Challenges: *External Grants to Enhance Graduate Training Reputation*

➤ **Broadening Experiences in Scientific Training (BEST)**

\$1.8 million over 5 years, *NIH*

➤ **Building Infrastructure Leading to Diversity (BUILD)**

\$21.2 million over 5 years, *NIH*



Graduate School

WSU was one of only 10 awardees for 2013 BEST grants





Graduate School

WSU was one of only 10 consortium awardees for 2014 BUILD grants





Graduate School

WSU is one of only 2 institutions to be awarded both the BEST and BUILD grants nationally



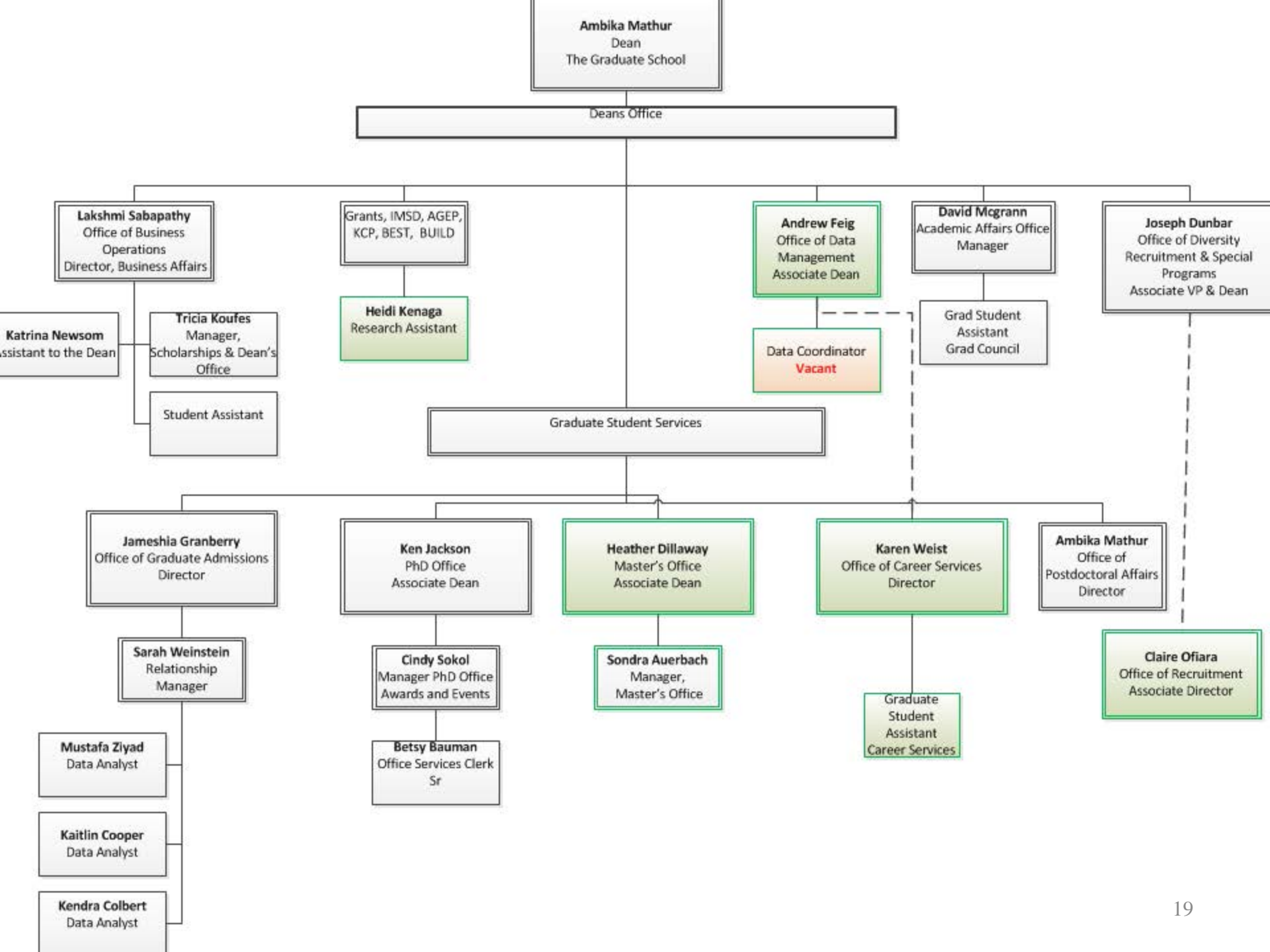


Graduate School Staff

17.5 FTE (non-academic)

**Excellent collaboration with:*

- Faculty and administration from all schools and colleges
- Provost, Vice President for Research, President





Graduate School

Q & A