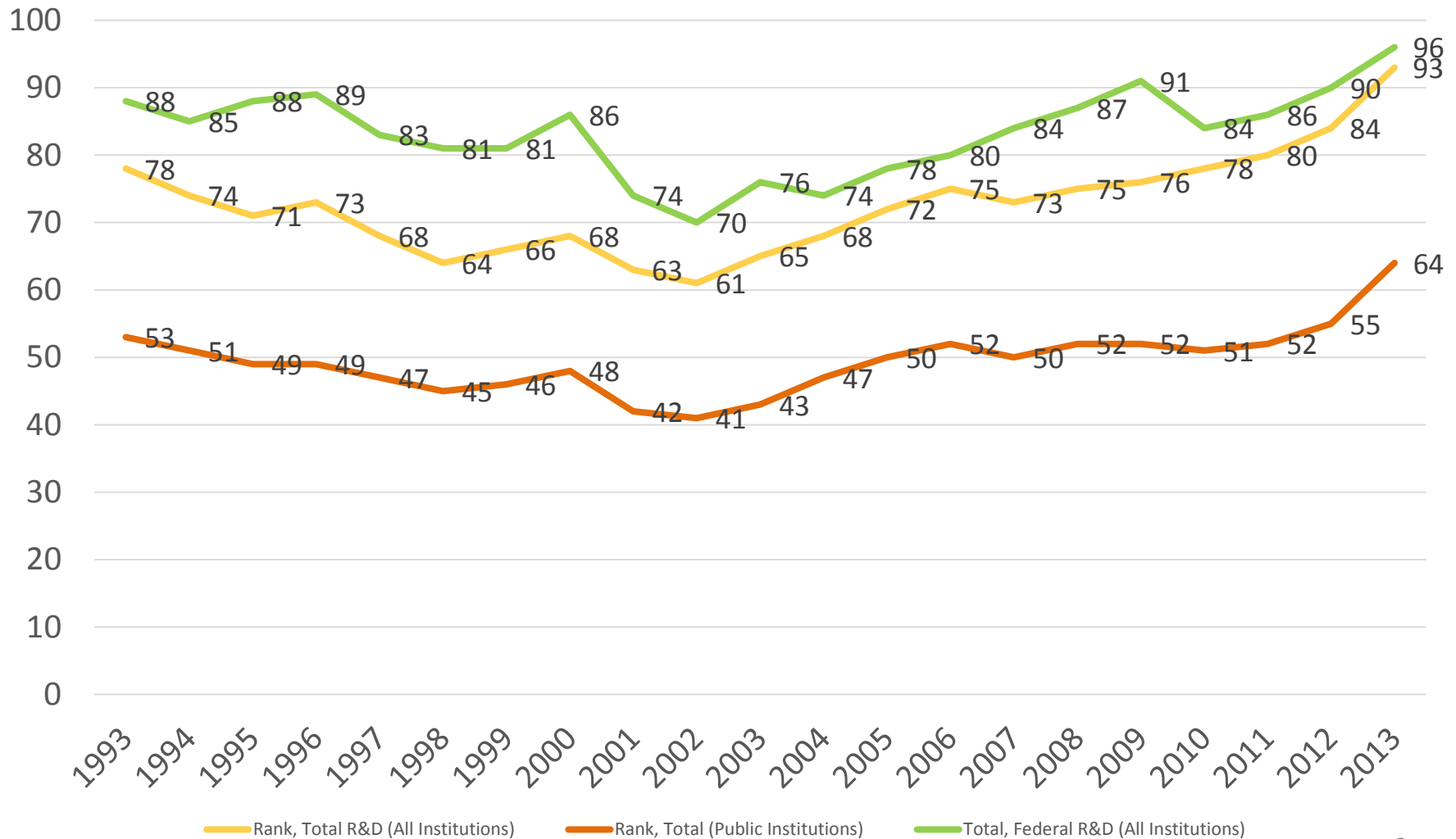


The IBio Story

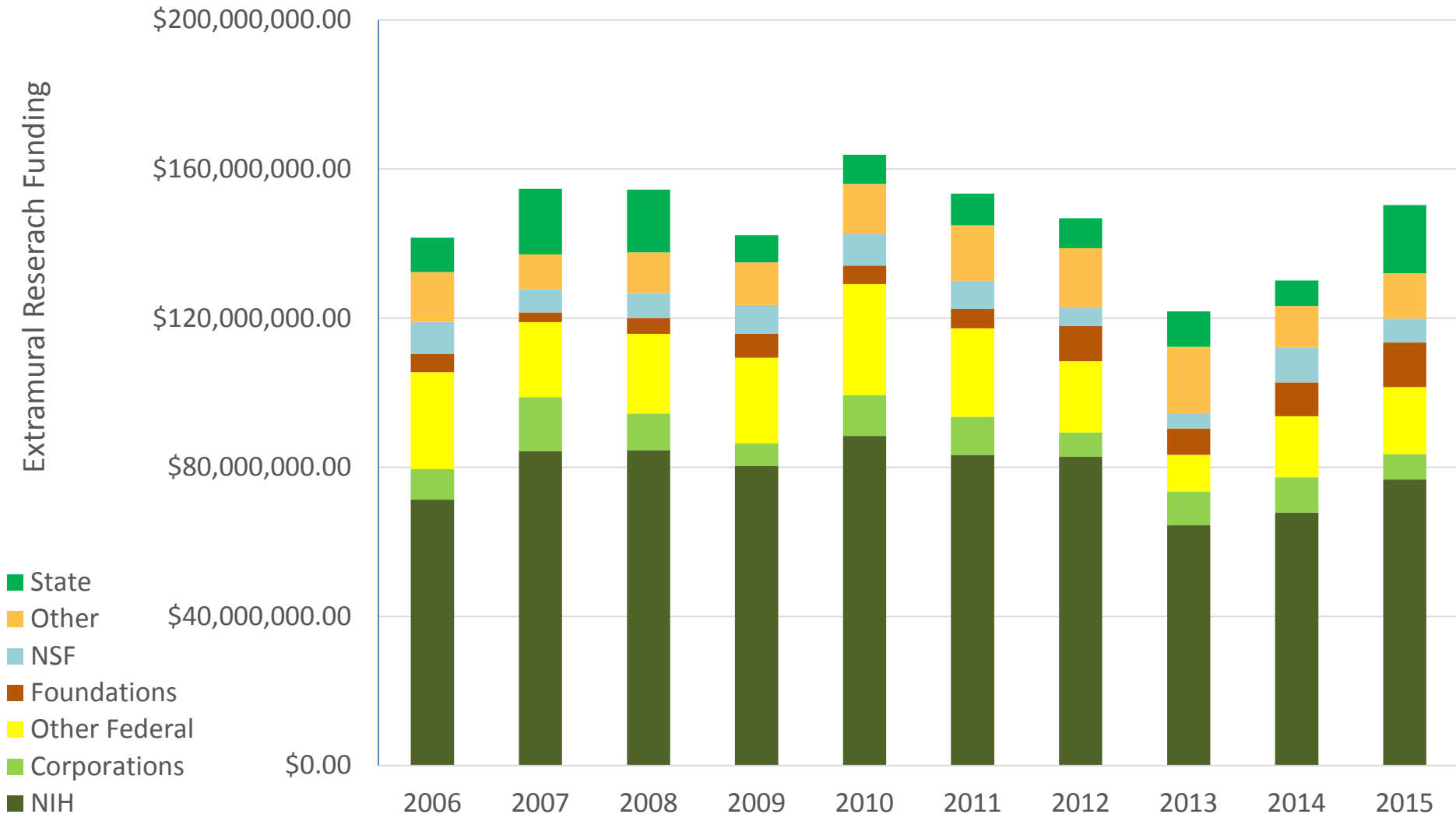
From Dalglish Cadillac Dealership to Integrative Biosciences Center



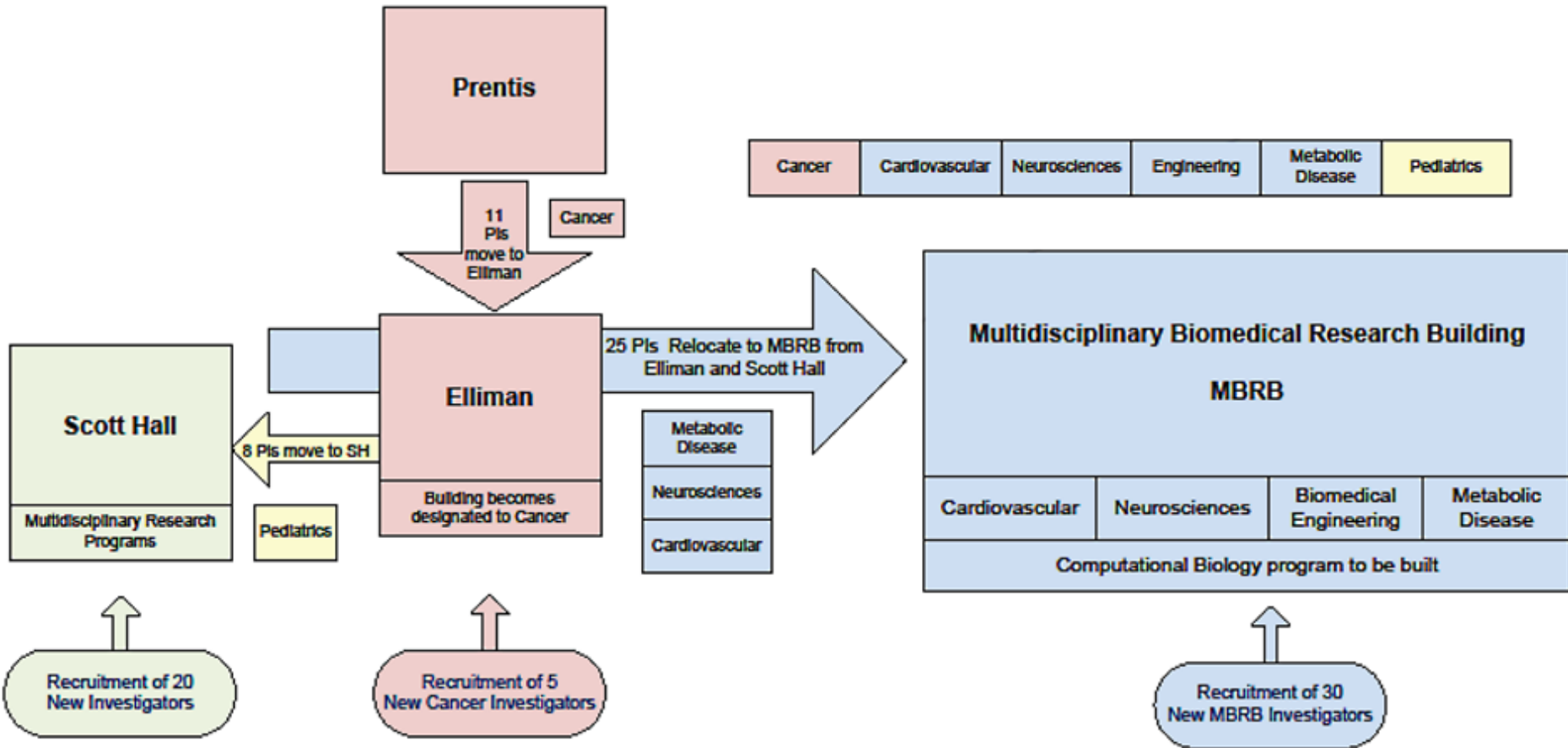
Wayne State University Research Expenditures – Ranking



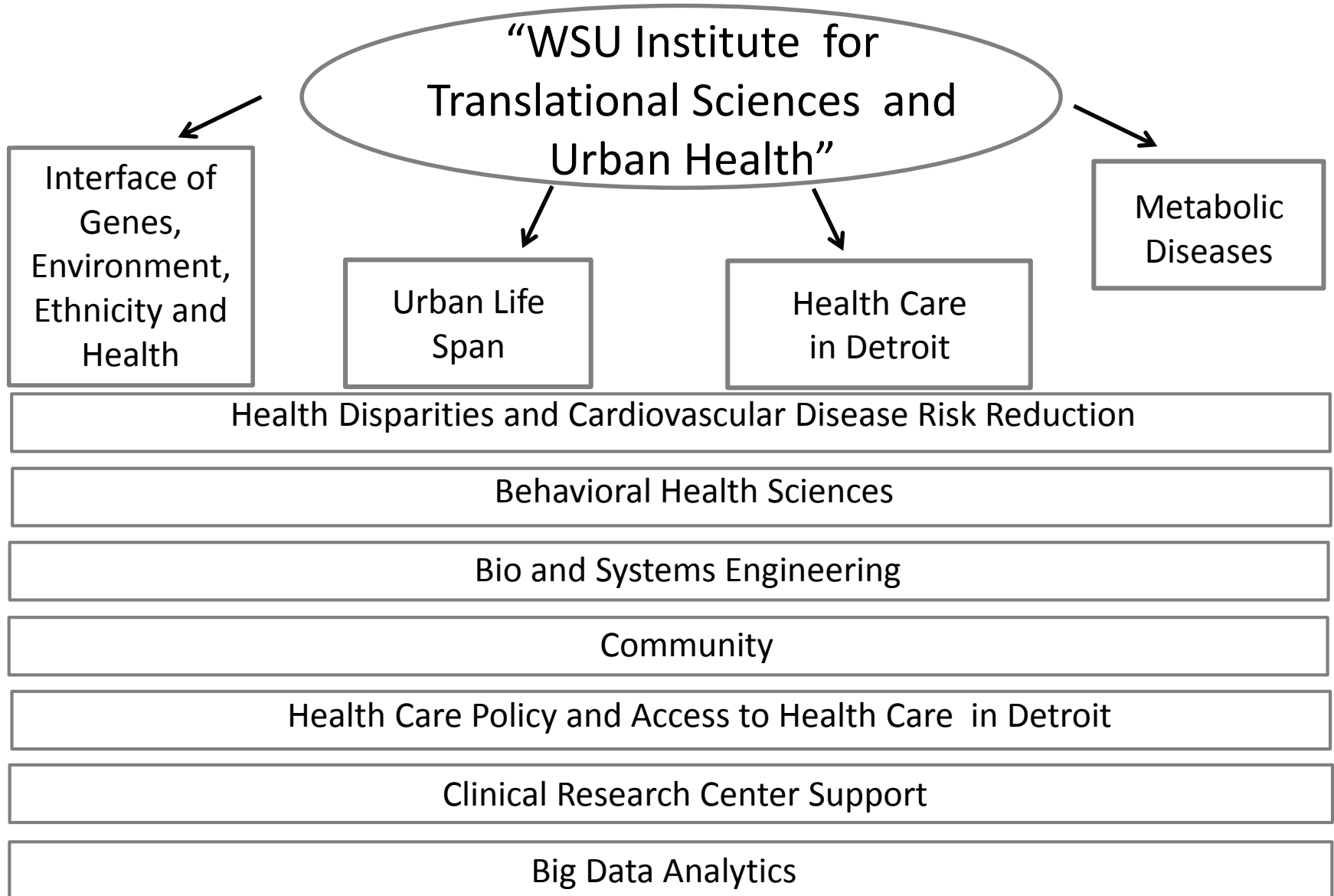
Extramural Research Funding to Wayne State University (YTD – thru August 2015 YTD)



Original Strategic Plan



Program in Integrative Biosciences



Aerial of Detroit in 1956



Dagleish Cadillac Dealership exterior



Dagleish Cadillac Dealership office space



Dagleish Cadillac Dealership display space

IBio southwest exterior corner



IBio southeast exterior corner



IBio aerial



IBio interior office space

IBio atrium



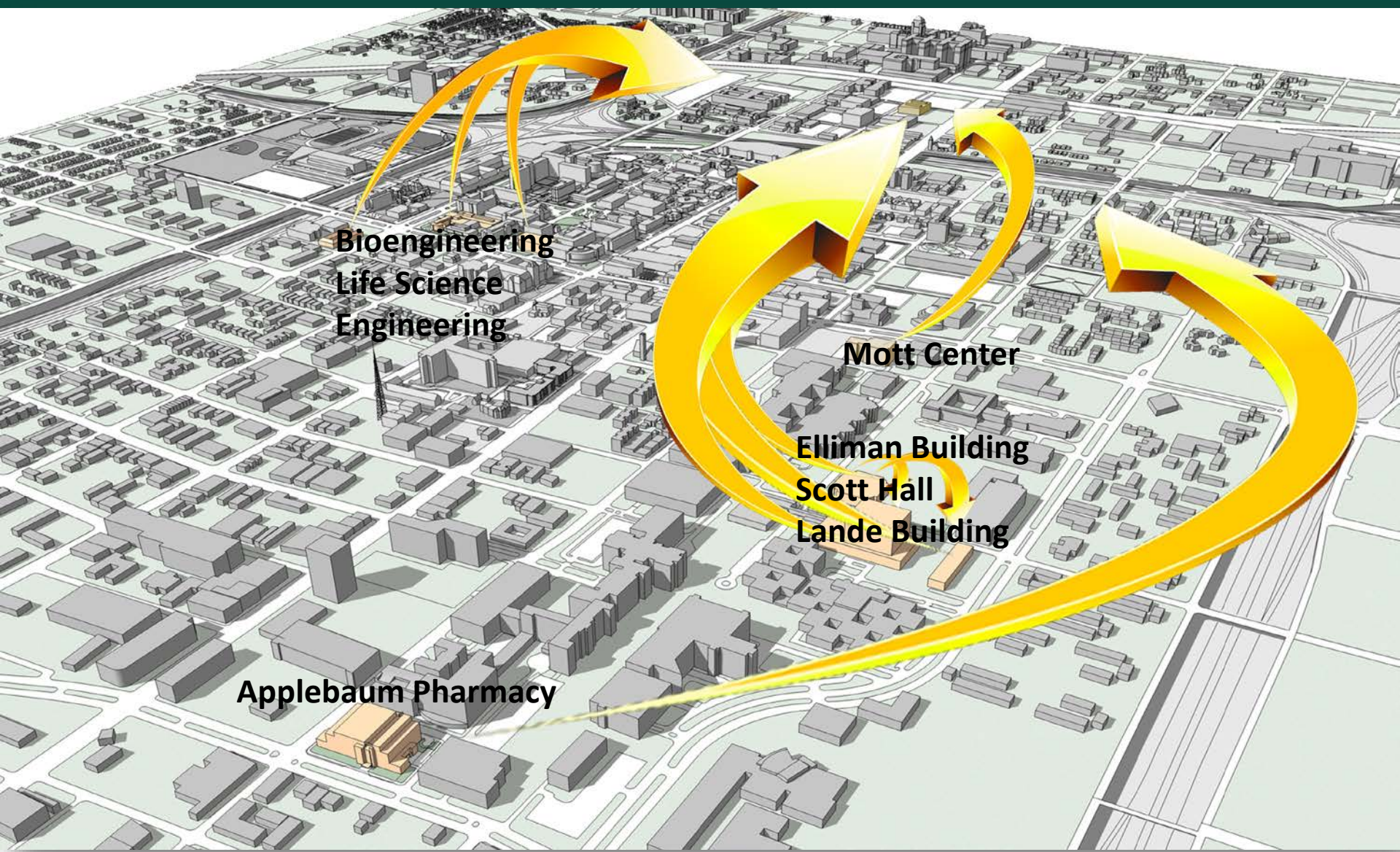
IBio lab space



IBio basement lab space



IBio Principle Investigator office



Bioengineering
Life Science
Engineering

Mott Center

Elliman Building
Scott Hall
Lande Building

Applebaum Pharmacy

8 lab buildings to IBio

26 Principal Investigators

The Teams

Bio & Systems Engineering



Gelovani



Ren

Behavioral Health



Wang



Zhang



Naar-King



Ellis



Carcone



MacDonell



Tiura



Kuhl

Slatcher



Clutchins



Satellite Space for Program Integration

Clinical Research Support Center (CRSC)



Parker



Ghosh



Levy



Misra



Brody

Center for Urban Responses to Environmental Stressors (CURES)



Ghosh



Parker



Runge-Morris



Kocarek



Jamesdaniel



Cote

Stemmer



Caruso



Ruden



Satellite Space for Enabling Technologies

Metabolic Diseases



Yi



Buggs-Saxton



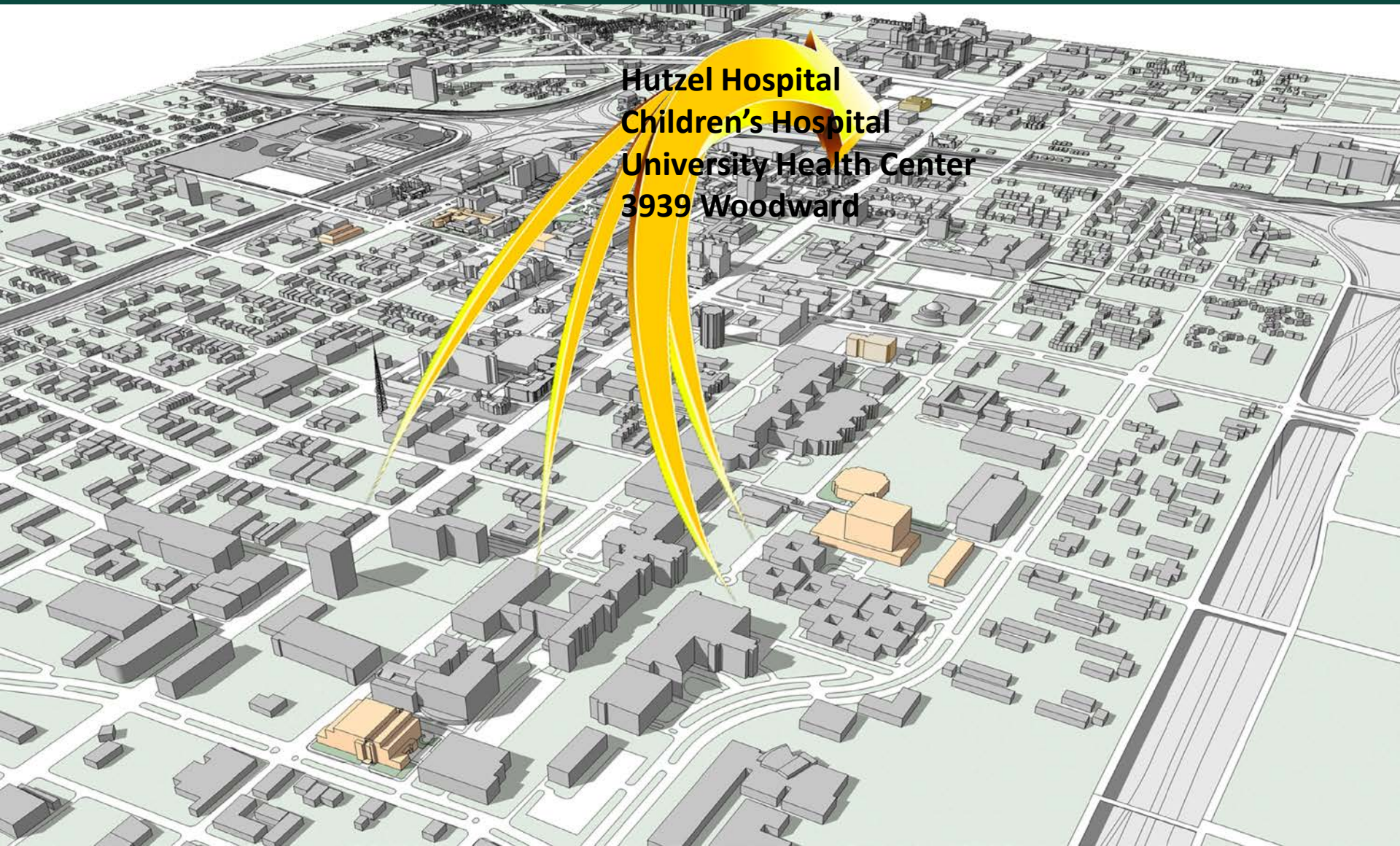
Granneman



Leff



Wang



Hutzel Hospital
Children's Hospital
University Health Center
3939 Woodward

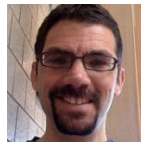
4 leased buildings to IBio



Ghosh



Cote



Brody



Naar-King



Levy



Parker



Kuhl



Ellis



Carcone



Misra



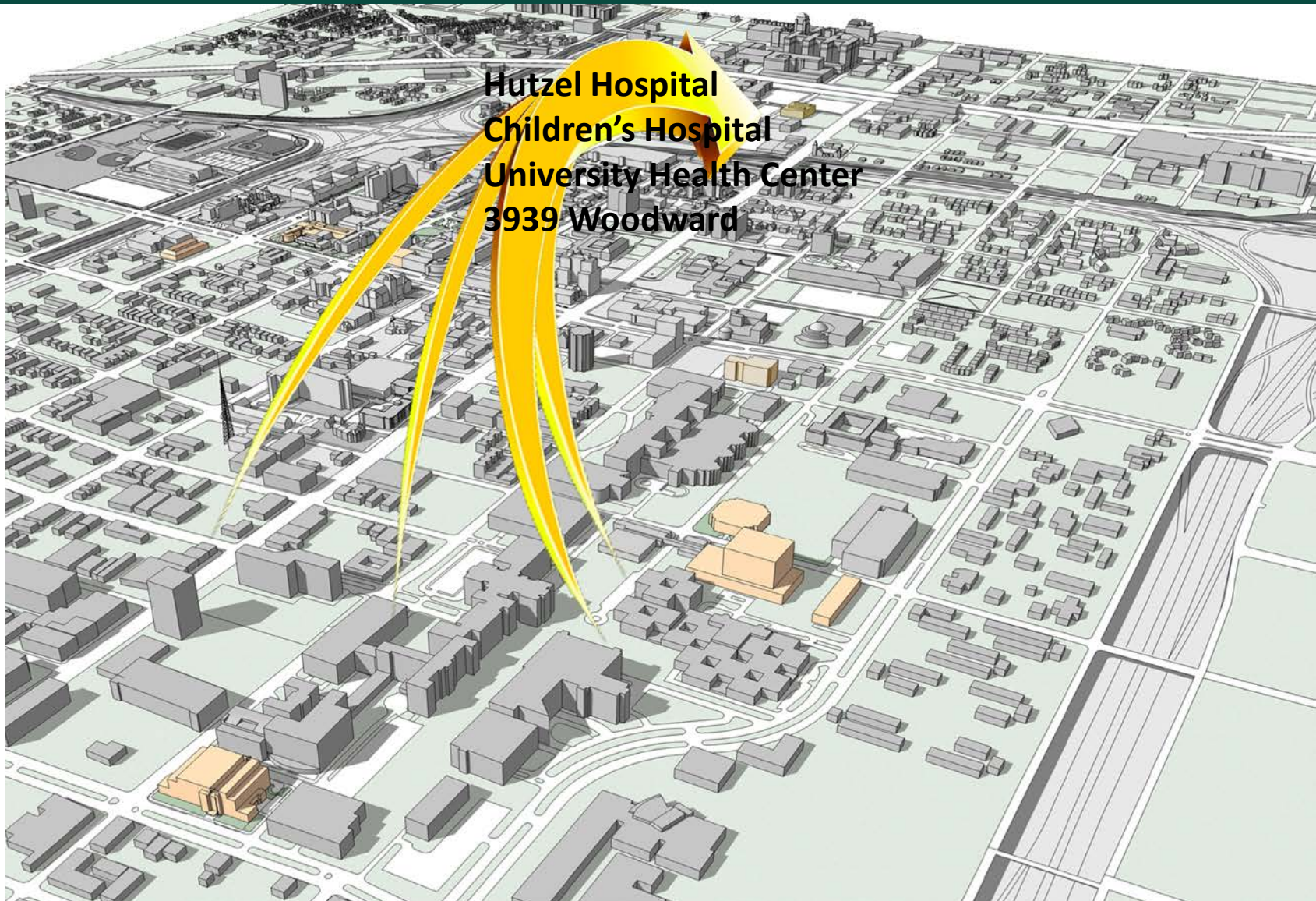
MacDonell

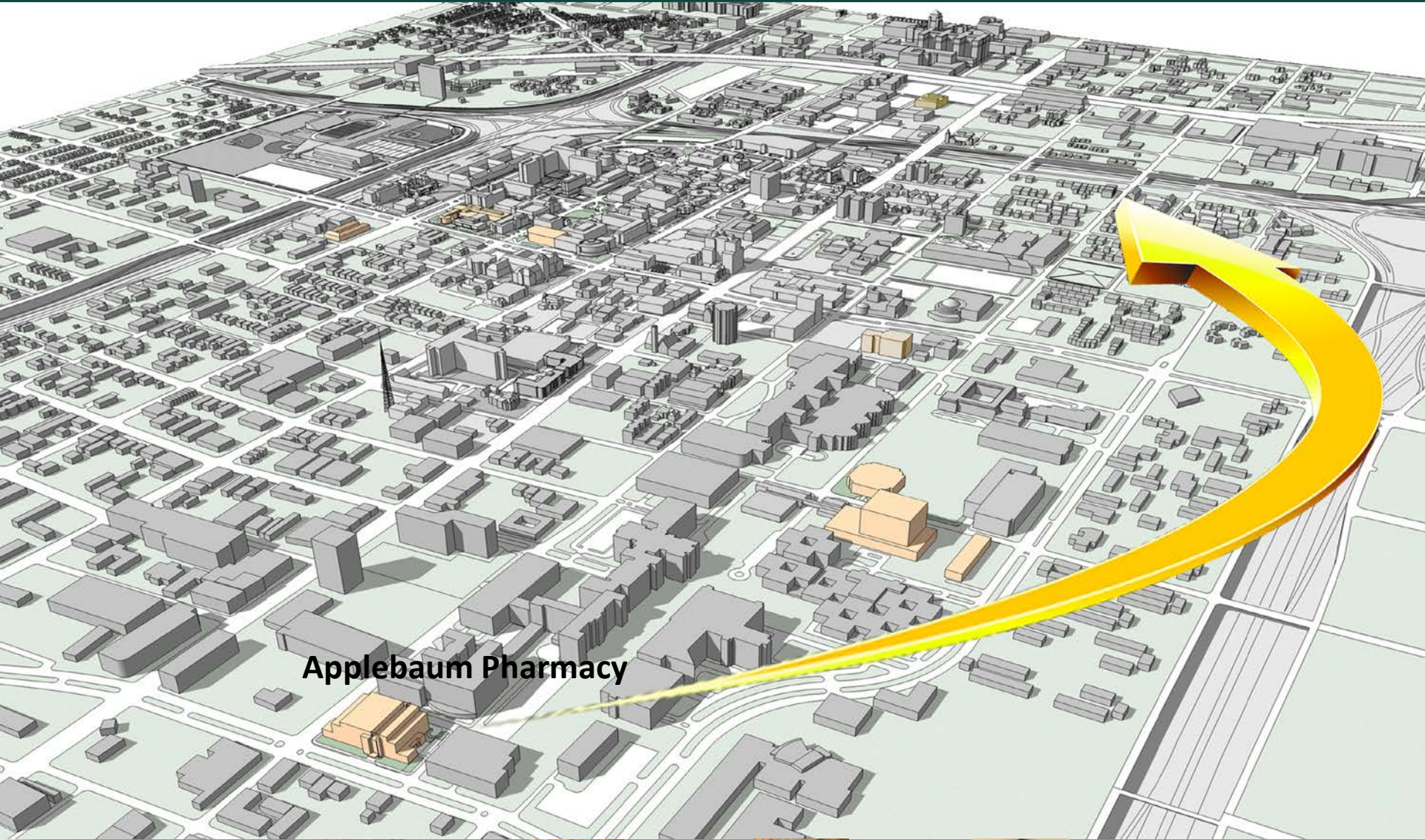


Tiura



Zhang





Yi



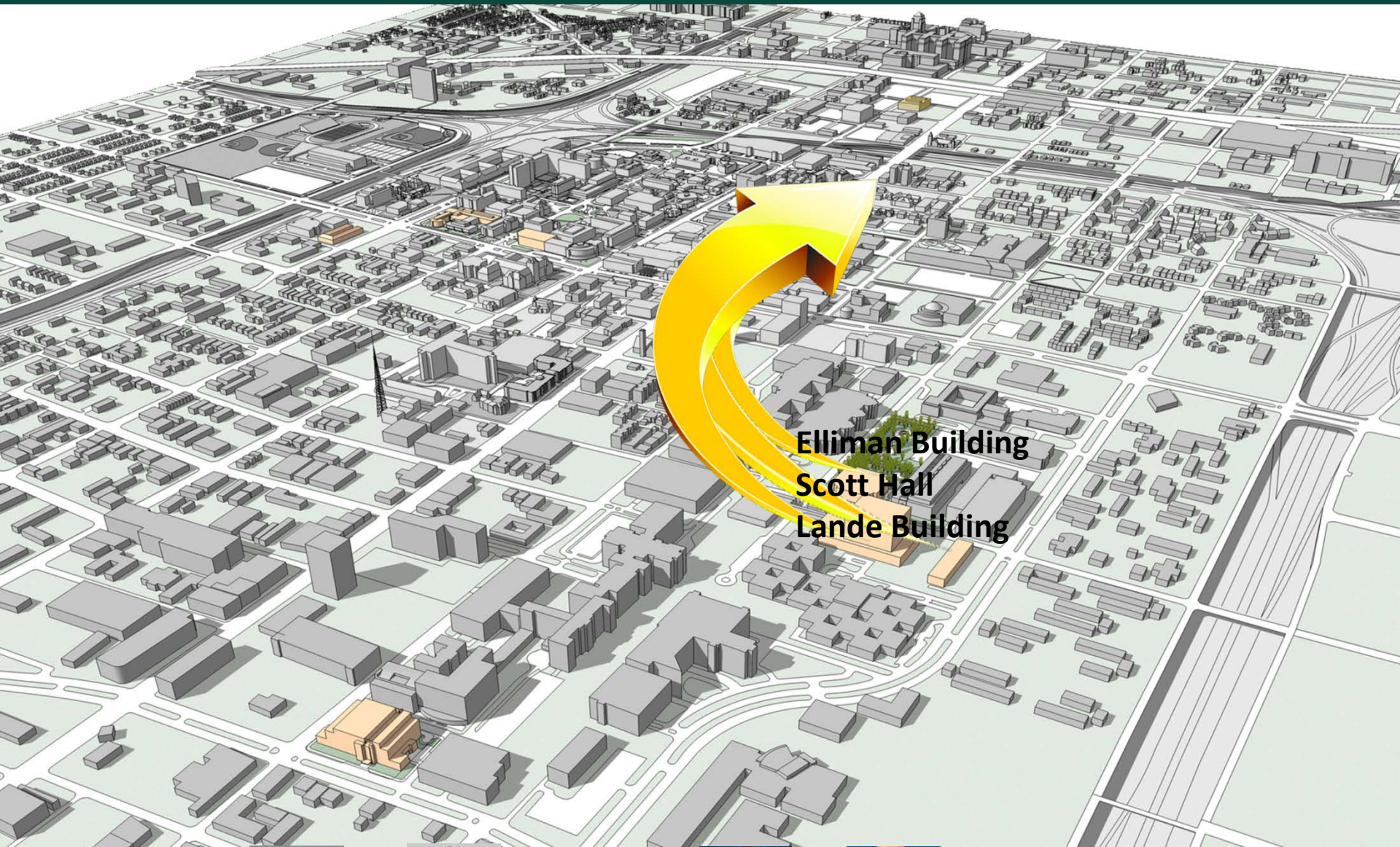
Runge-Morris



Kocarek



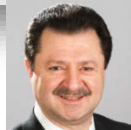
Jamesdaniel



Elliman Building
Scott Hall
Lande Building



Buggs-Saxton



Gelovani



Wang



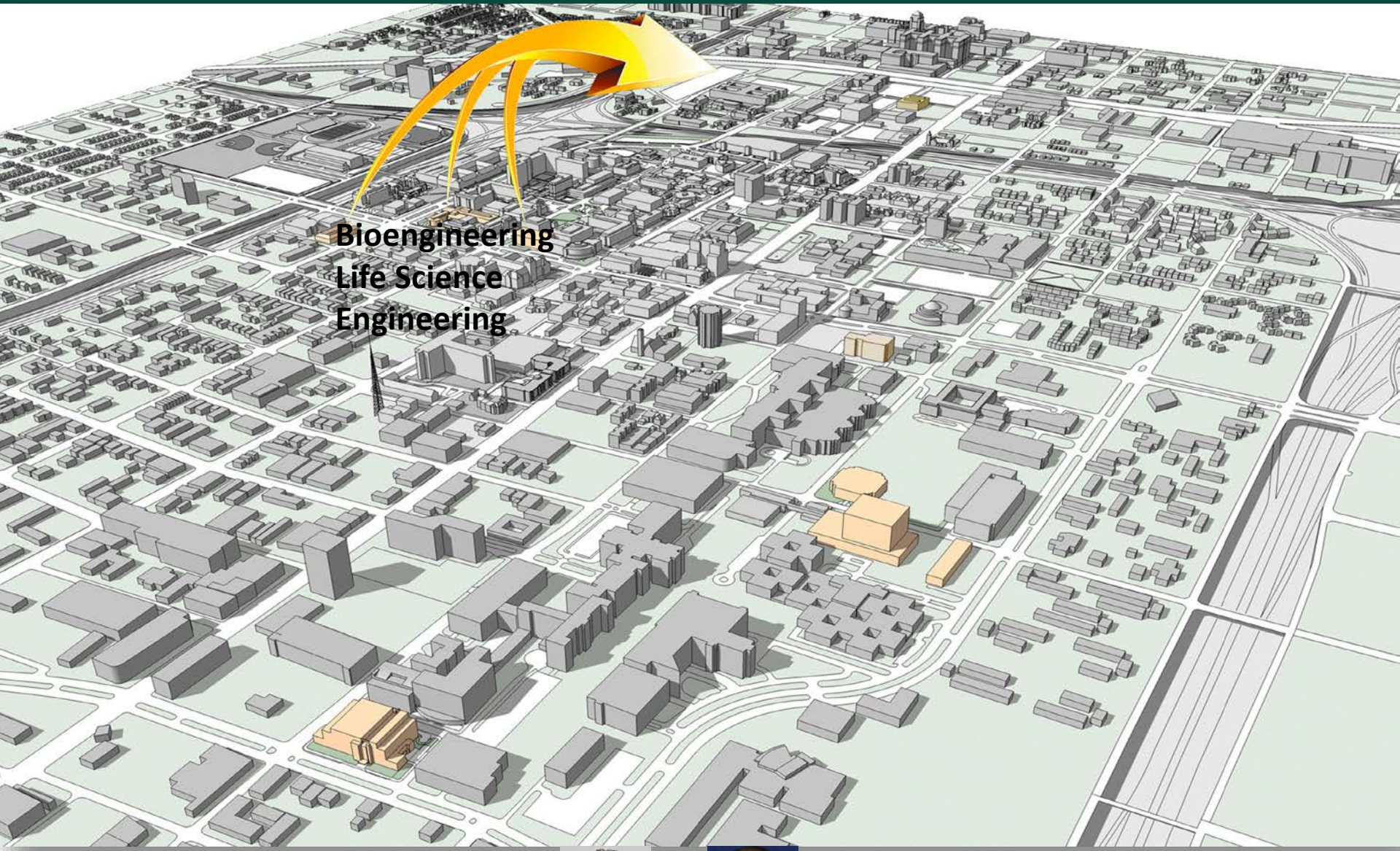
Granneman



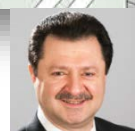
Leff



Wang



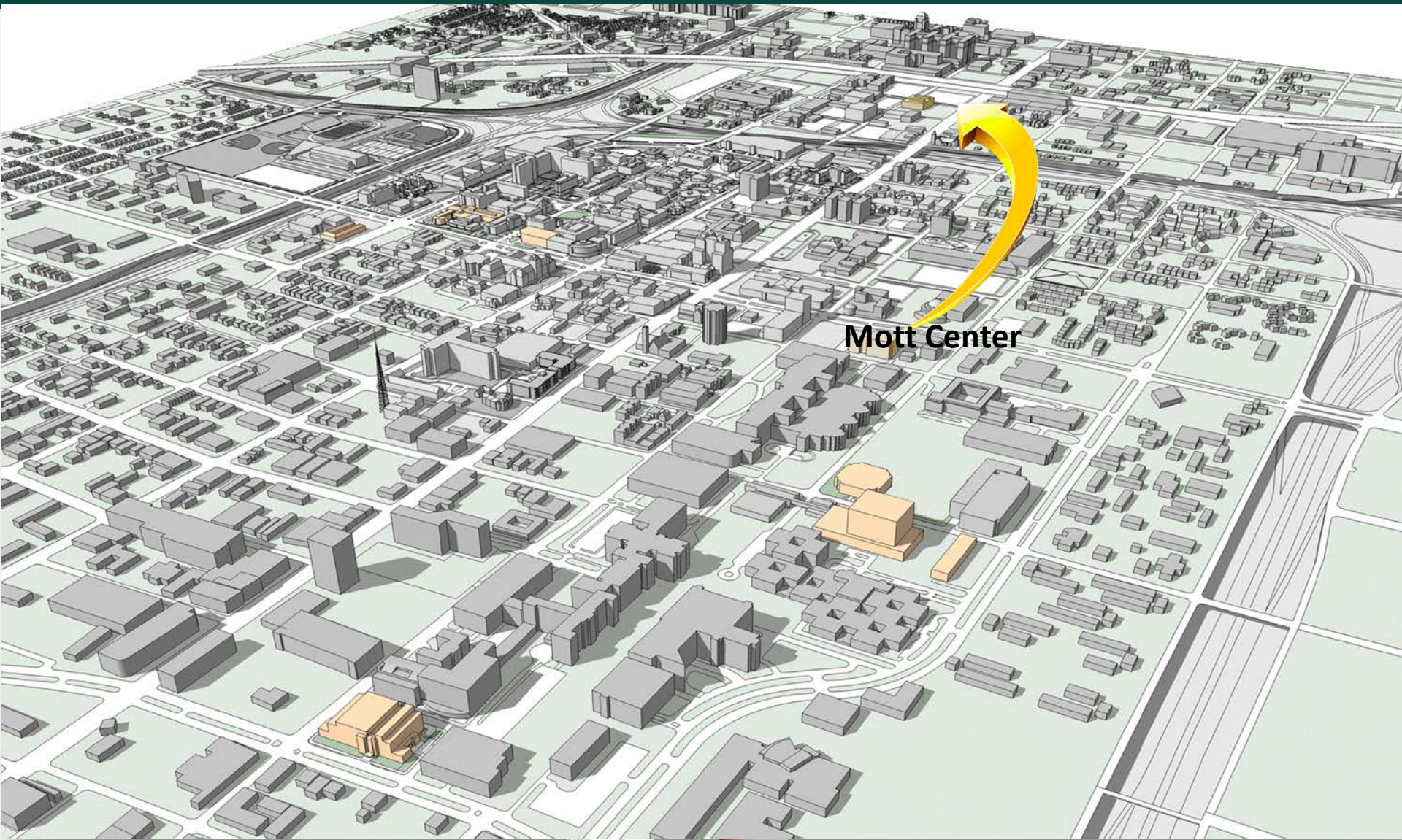
Bioengineering
Life Science
Engineering



Gelovani



Ren



Parker



Levy

The Teams

Bio & Systems Engineering



Gelovani



Ren

Behavioral Health



Wang



Zhang



Naar-King



Ellis



Carcone



MacDonell



Tiura



Kuhl

Slatcher



Clutchins



Satellite Space for Program Integration

Clinical Research Support Center (CRSC)



Parker



Ghosh



Levy



Misra



Brody

Center for Urban Responses to Environmental Stressors (CURES)



Ghosh



Parker



Runge-Morris



Kocarek



Jamesdaniel



Cote

Stemmer



Caruso



Ruden



Satellite Space for Enabling Technologies

Metabolic Diseases



Yi



Buggs-Saxton



Granneman



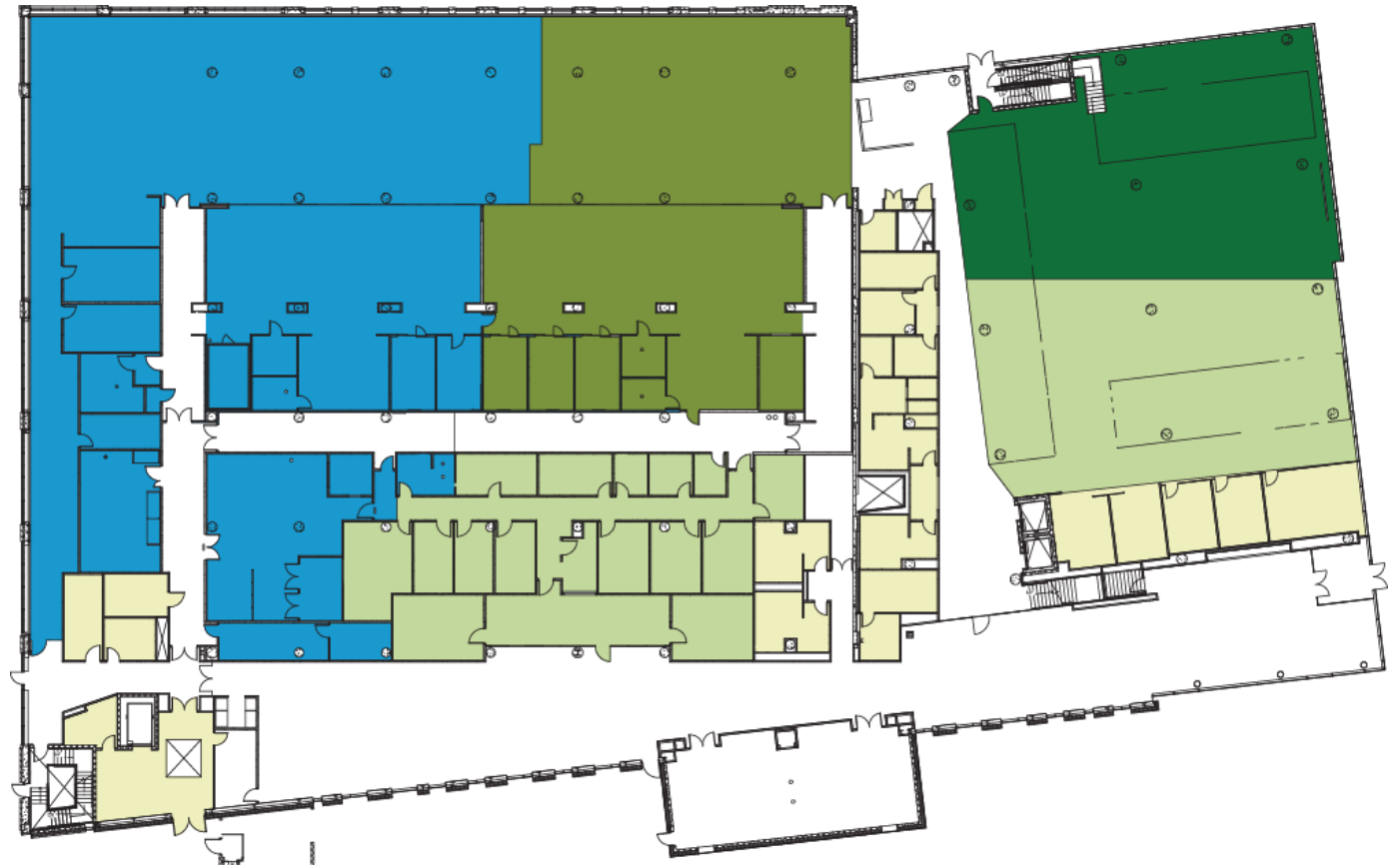
Leff



Wang

Integrative Biosciences Center

17 People from Henry Ford Health Systems



- Support Space
- Henry Ford Health Systems
- Bio & Systems Engineering
- Clinical Research Support Center
- Behavioral Health

1st Floor

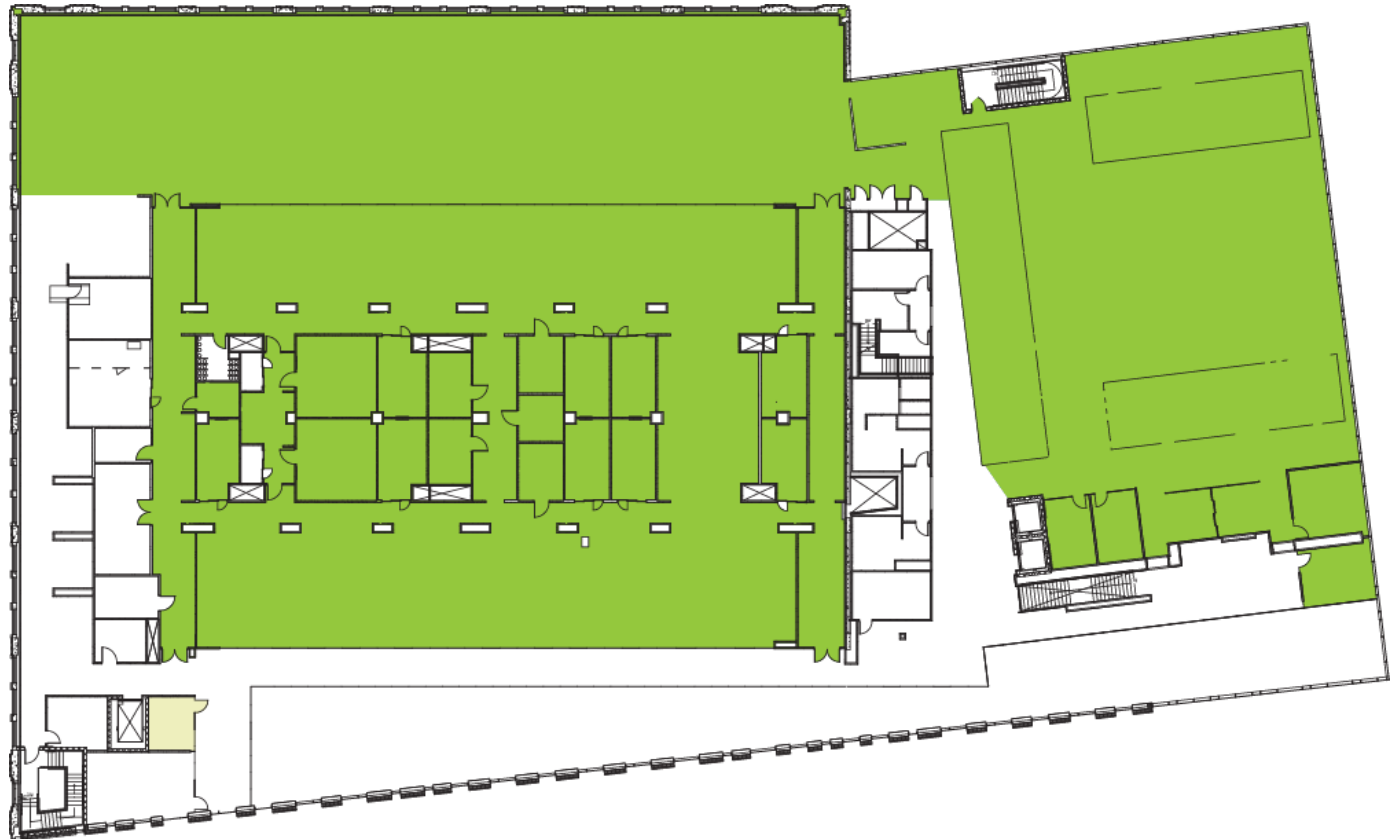
Integrative Biosciences Center



- Growth Space
- Support Space
- Shared Space
- Center for Urban Responses to Environmental Stressors
- Metabolic Diseases
- Behavioral Health

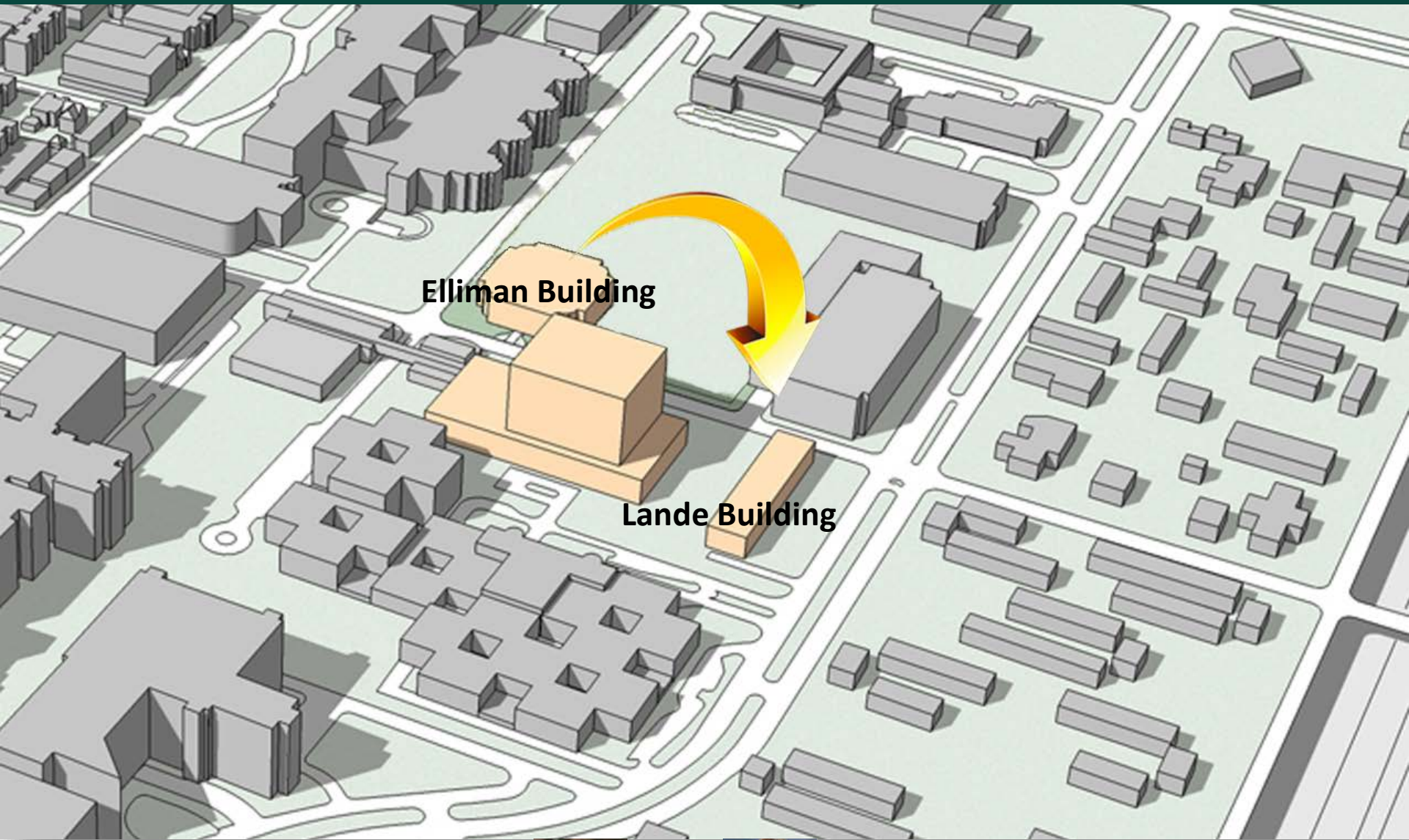
2nd Floor

Integrative Biosciences Center



- Growth Space
- Support Space

3rd Floor



Elliman Building

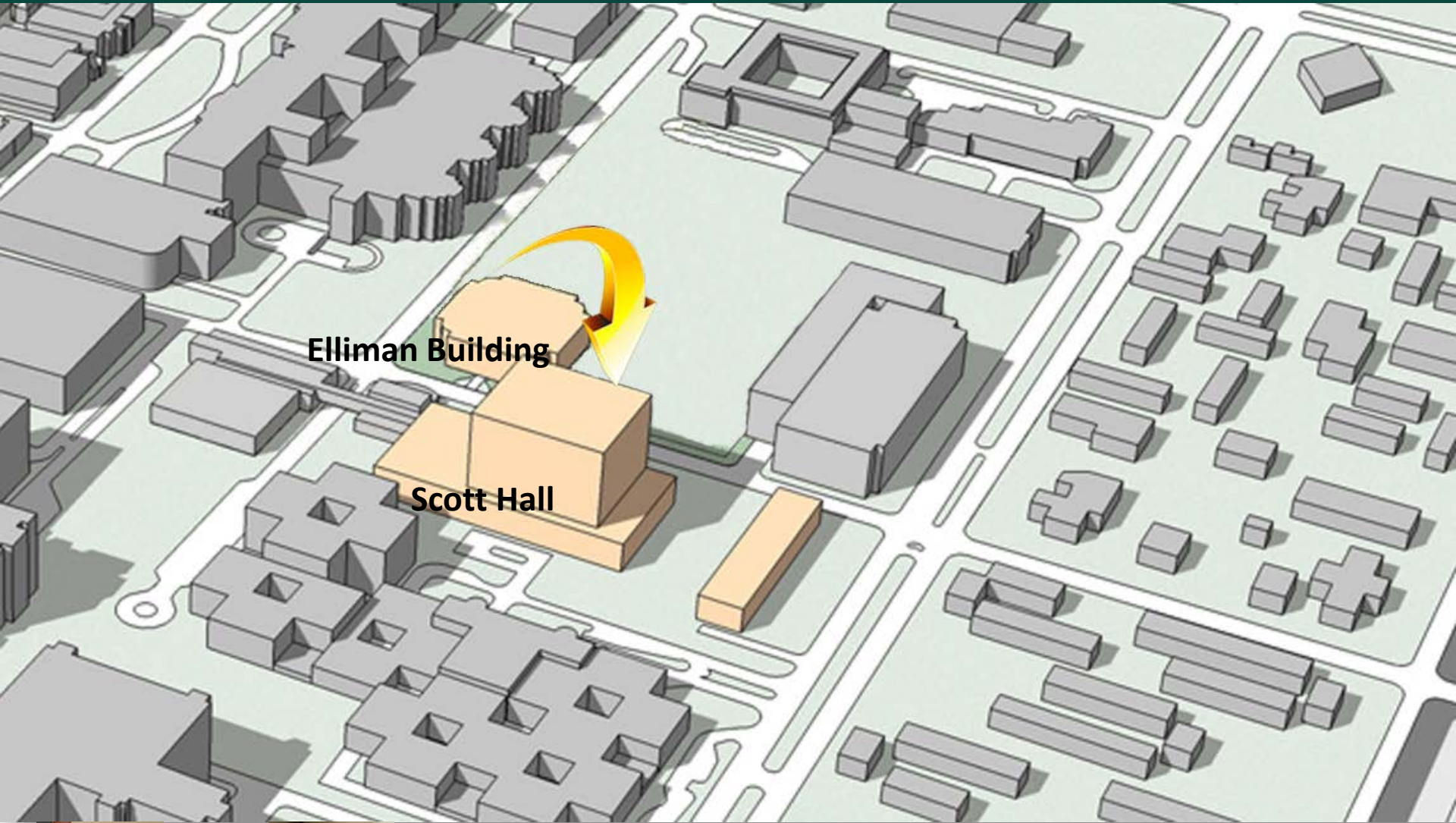
Lande Building



Prasad



Heidemann



Elliman Building

Scott Hall



Sanderson



Whittaker



Pryzklenk



Datta

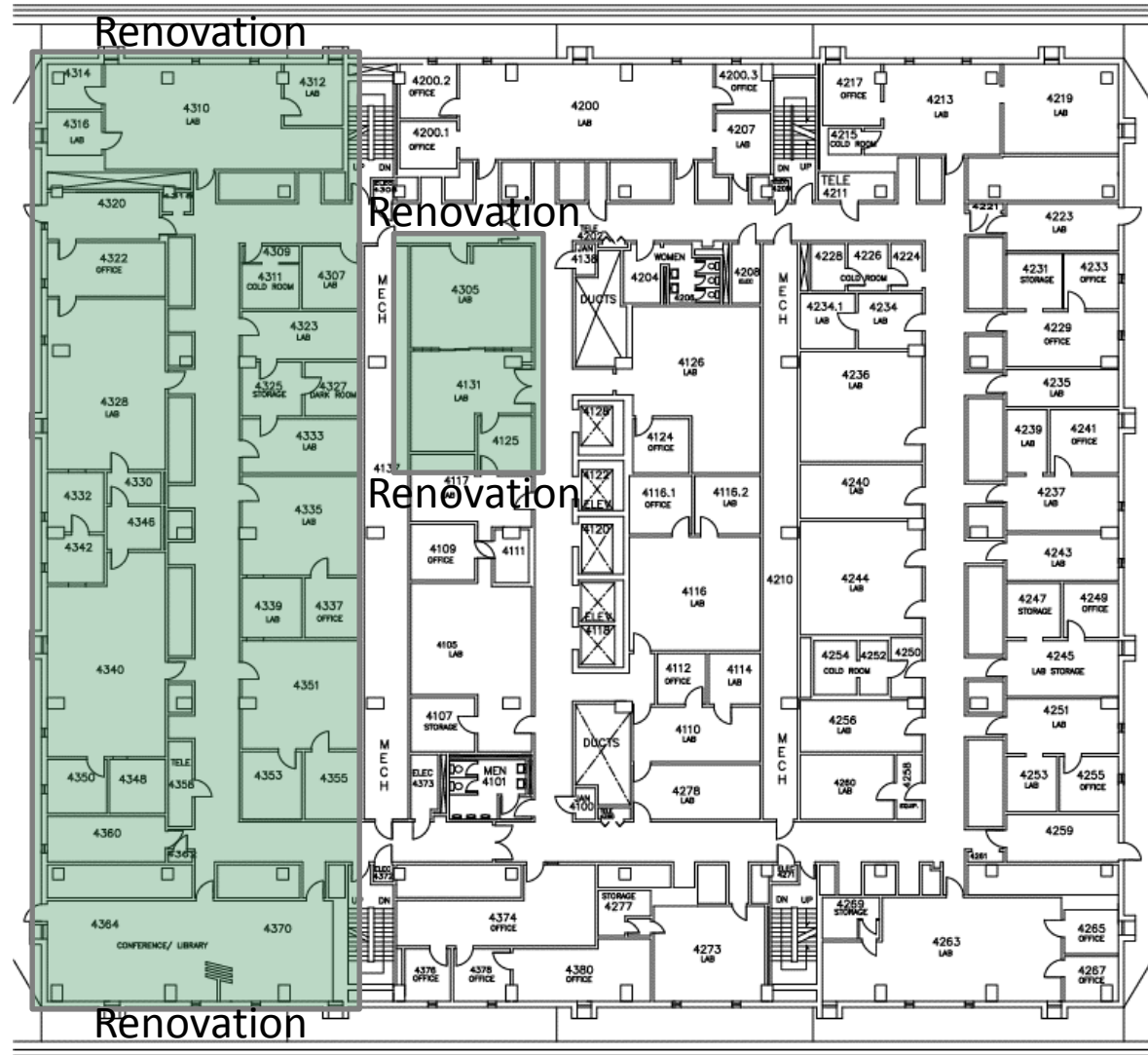


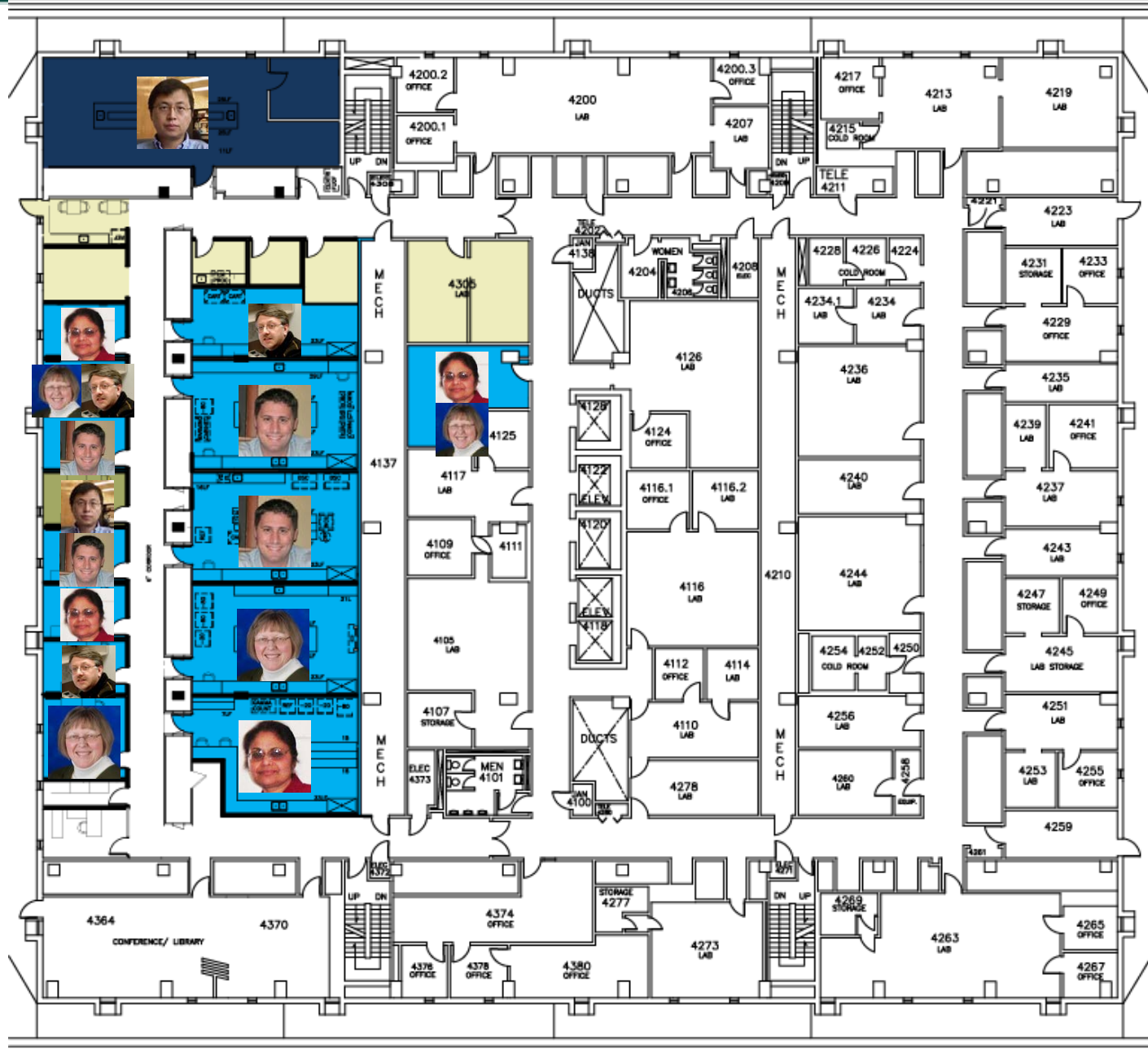
Lasley






Cala

Gordon H. Scott Hall of Basic Medical Sciences New Plan – 4th Floor





-  Cardiovascular Research Institute
-  Physiology
-  Biochemistry & Molecular Biology
-  Office / Support Space



Whittaker



Datta



Pryzklen

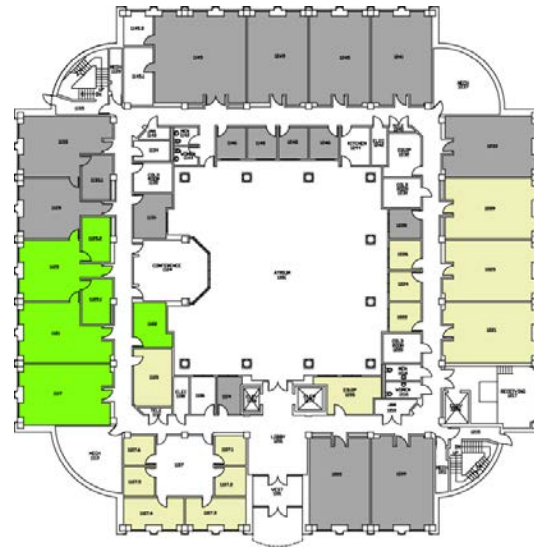


Sanderson



Yang

Elliman Clinical Research Building – New Floorplans



1st Floor

- Office / Support Space
- Cancer
- Growth Space

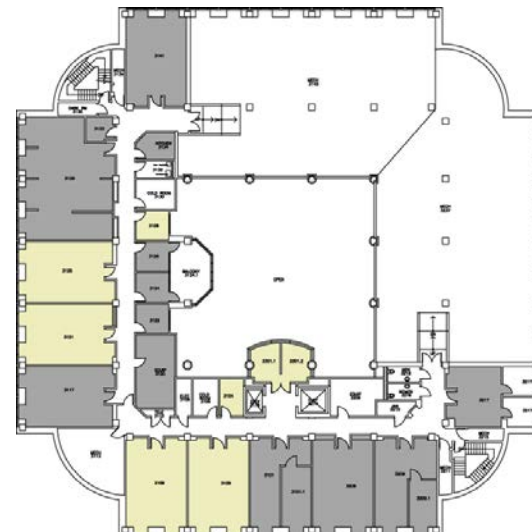
2nd Floor

- Pediatrics
- Neurology
- Molecular Medicine / Genetics
- Physiology
- Obstetrics / Gynecology
- Cancer
- Growth Space



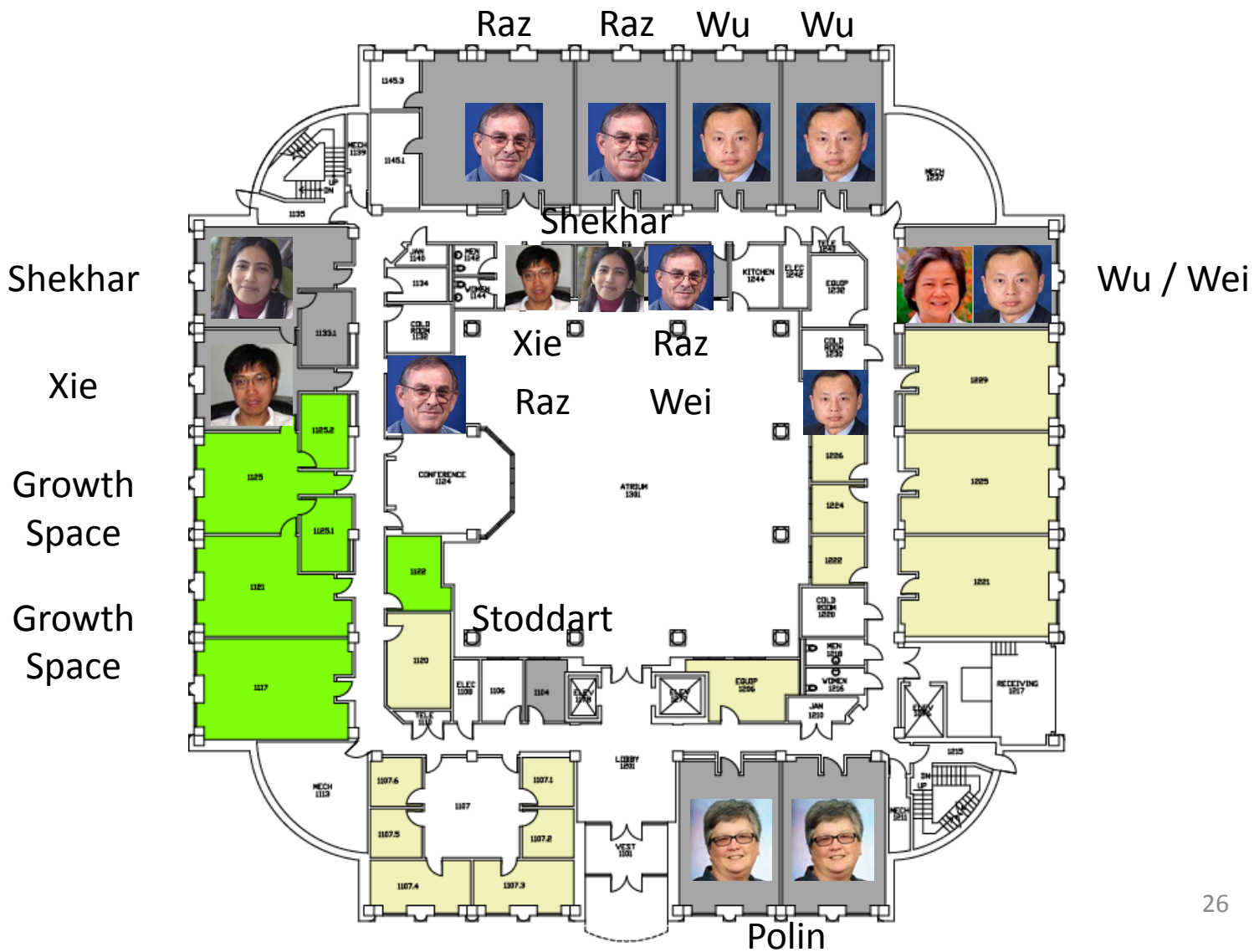
3rd Floor

- Cancer
- Office / Support Space



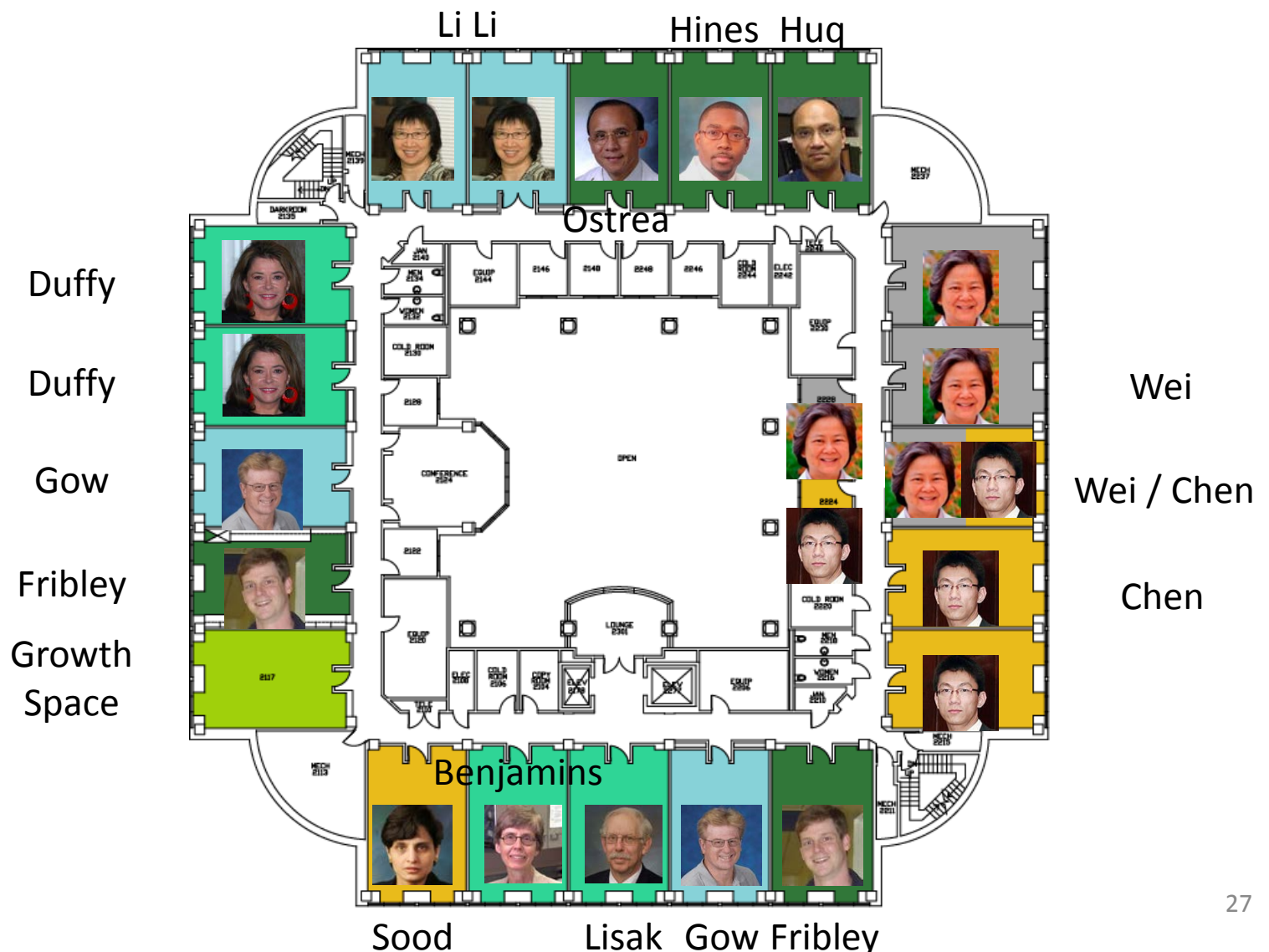
Elliman Clinical Research Building
New Plan – 1st Floor

- Office / Support Space
- Cancer
- Growth Space
- Cardiovascular Research Institute



Elliman Clinical Research Building New Plan – 2nd Floor

- Pediatrics
- Neurology
- Molecular Medicine / Genetics
- Physiology
- Obstetrics / Gynecology
- Cancer
- Growth Space



Integrative Biosciences Center

Budget: \$93M

BOG Approval Date: October 3, 2012

Occupancy Date: August 2015

Number of PI Teams after Occupancy: 26

Gordon Scott Hall

Budget: \$5M

BOG Approval Date: June 26, 2015

Occupancy Date: June 2016 (Expected)

Number of PI Teams after Occupancy: 5

Elliman Clinical Research Building

Budget: \$8.9M

BOG Approval Date: September 25, 2015 (Expected)

Occupancy Date: November 2016 (Expected)

Number of PI Teams after Occupancy: 21