

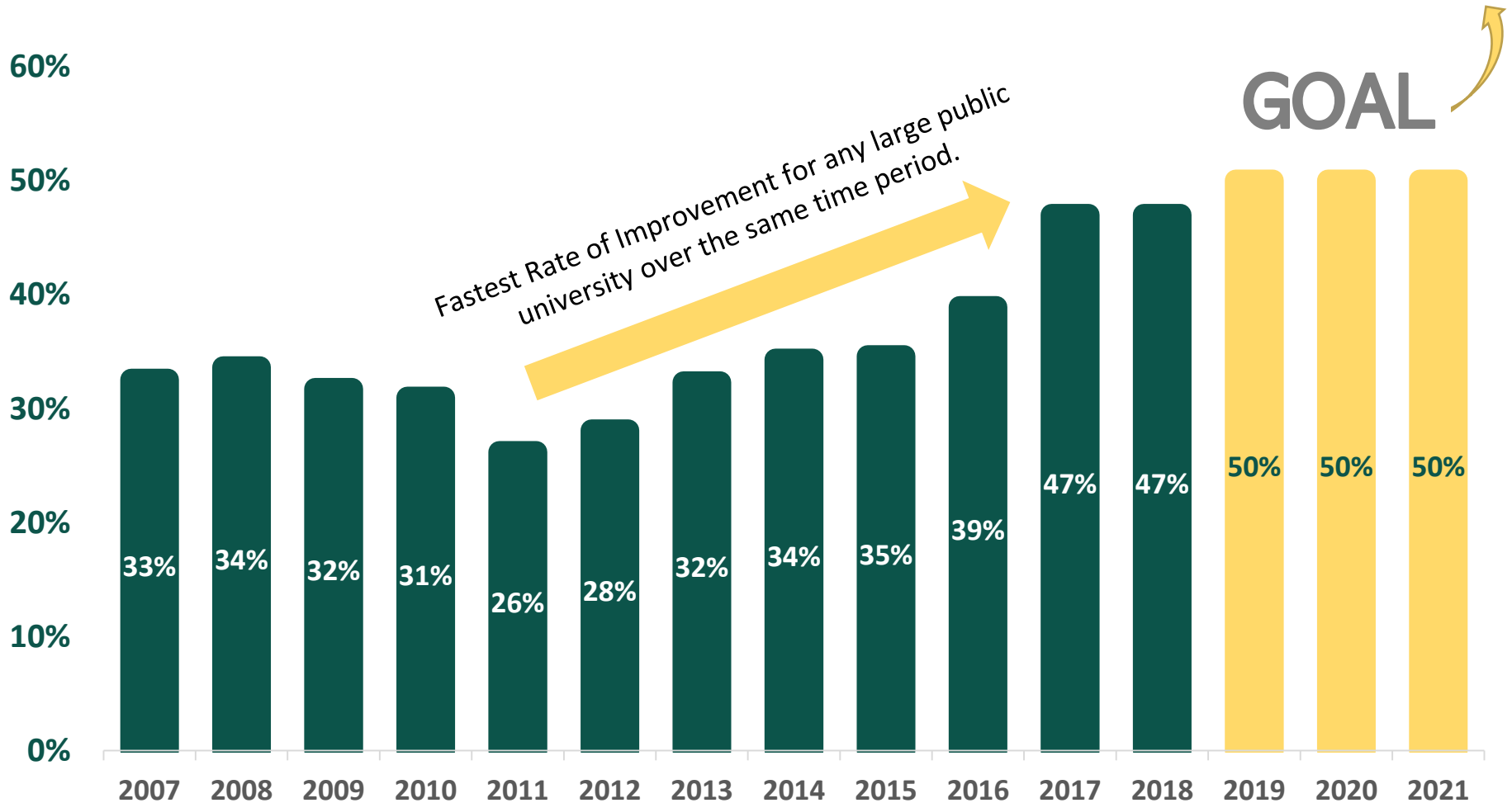


Student Success Annual Report

Board of Governors
March 20, 2019

Monica Brockmeyer
Senior Associate Provost for Student Success

Six-Year Graduation Rates



We need 138 more students to graduate by August to reach 50% -- two years ahead of schedule!

Wayne State University wins national award for huge improvement in graduation rates

Wayne State has fastest improving graduation rate in the nation

By BRYCE HUFFMAN • DEC 20, 2018



The New York Times

When Your College Has Your Back



#205 in National Rankings

up from unranked nationally before the start of the University Strategic Plan

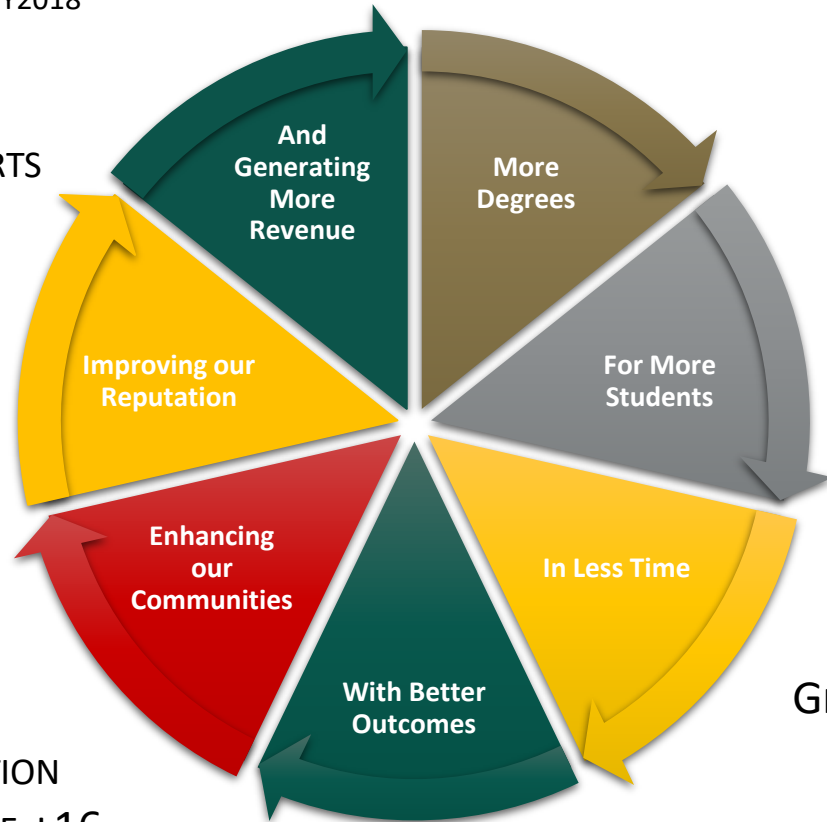


Return on Investment in Student Success

UG CREDIT HOURS UP
6,720
BETWEEN FY2016 AND FY2018

SIX YEAR GRADUATION RATE UP 21
PERCENTAGE POINTS SINCE 2011

US NEWS AND WORLD REPORTS
RANKED 205
UNRANKED JUST TWO YEARS AGO



BLACK STUDENTS + 15%
LATINO/A STUDENTS + 25%
FIRST GEN + 18%
PELL ELIGIBLE + 21%

HIGHEST SOCIAL MOBILITY
INDEX AMONG MICHIGAN
PUBLIC UNIVERSITIES
19%
ACCORDING TO THE NEW YORK TIMES

FOUR YEAR
GRADUATION RATE + 15%

POST-GRADUATION
EMPLOYMENT RATE +16
PERCENTAGE POINTS
(SINCE 2008)

STUDENTS PASSING ONE MORE CLASS ON AVERAGE IN THE
FIRST SEMESTER.

12% POINT INCREASE IN GPA'S ABOVE 3.0.



Implementing effective practices



enriching our environment



transforming ourselves

How we are cultivating student success



We are implementing state of the art practices



Academic Advising



Student Journey



Psychosocial Interventions



Student Services



Financial Aid



Student Learning

We are implementing state of the art practices

What is your **VISION** for 2022?

Realize that vision through
the Wayne State Warrior
Vision Impact Program (VIP).



Warrior VIP Program:

Brings it all together to do all this in a community, not in offices.

2017-2018:

1st to 2nd year retention rate for Black VIP students: 82%

1st to 2nd year retention rate for White students: 81%



**We are enriching our
fundamental capacity for excellence
in support of our students**



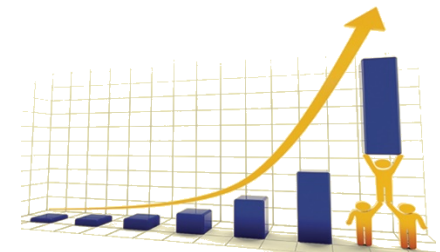
Process Mapping



Technology



Professional Development



Strategic Finance

**We are
transforming
ourselves
individually and
collectively to
create a culture
of student
success.**



Key Strategies

Faculty Role in
Student Success

High Tech/High
Touch Academic
Advising

Closing
Educational
Disparities

Fostering
Culture of
Student Success

Key Strategies



High Touch / High Tech Academic Advising & Student Services

- **High Touch**

- Expanded Advisor Training through ATA
- Student Success Professional Development for other academic staff
- Deeper collaborations between advisors, faculty, and other support programs → each student has a team.
- More transparency between everyone about what supports & actions have been provided.

- **High Tech**

- Deepen analytics.
- Predict student **need** not student **risk**.
- More signals & information to advisors, faculty, and others.
- Better understanding of student pathways.
- More transparency between everyone about what supports & actions have been provided

Key Strategies

Warrior Vision & Impact Program (LC)

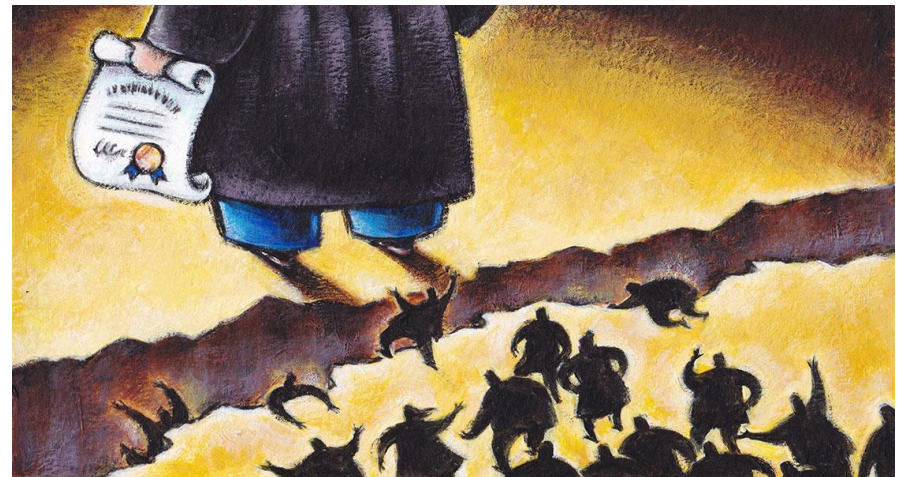
- Extend into Years 3 and 4
- Expand capacity including transfer students
- Increase Faculty interactions through collaborations with course-based LCs
- More strategic use of work study

INNOVATION
AND
TRANSLATION

VIP Coalition

- More supports for Network, RISE, CLLAS & other learning communities
 - Outcomes Reporting
 - Best practices sharing
 - Student Success staff programmatic support
- Expand supports for adult learners & returning students

Closing
Educational
Disparities



Everything Else...

Warrior Way Back	CLAS: Support for students on probation	Brain-based Study Skills	Pre-nursing Action Team	Financial Literacy	Employability
Business Process Mapping	Engineering: Earlier Interventions	Residential Curriculum	MAT 1050 Innovations	Fine-grained Cohort Monitoring	Mindfulness Meditation for College Students
Course Innovations	Behavioral Interventions Team	Milestone course identification & monitoring	Increased support for testing accommodations	Inclusive Excellence Action Team	Wayne Experience
Data Governance	Transfer Curriculum Alignment	Psychosocial Interventions	APEX: Transition into Major/Career	ENG 1020: Enriched EAA Response	Support for First Gen Students
Network & RISE Learning Communities	Financial Aid Strategy: Wayne Access	Math Placement Improvements	Peer-Assisted Learning + Library Collaborations	Food Pantry	Cross-campus calendar alignment
GEOC: improve general education assessment	College Student Inventory (Incoming Student Data)	College of Education: Success Coach	STEM Commons	Open Textbooks	McNair Scholars
CHAMPS Program	Advisor Training Academy	Operational Excellence in Student Success	Mentoring	Title IX Training	Learning Outcomes Assessment