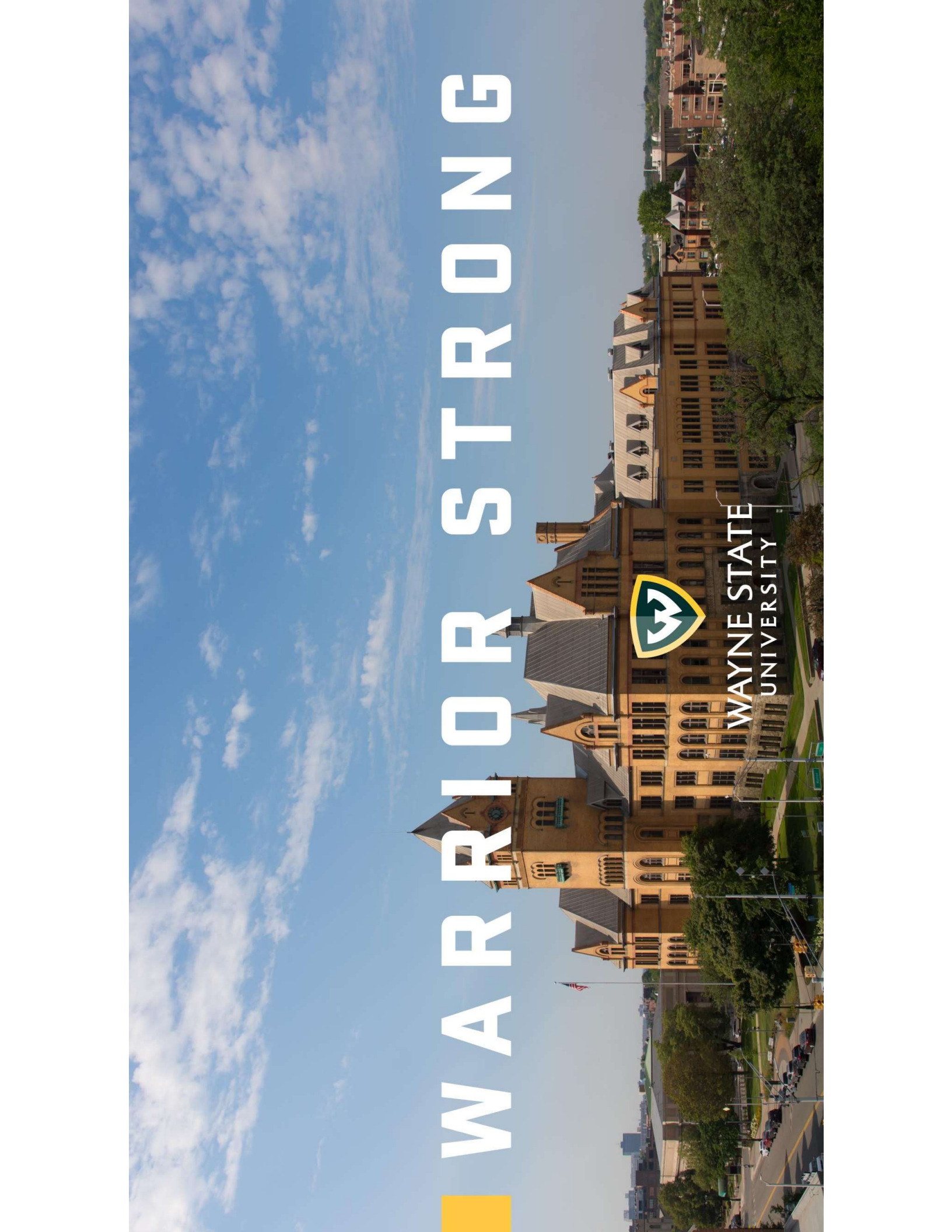


WARRIOR STRONG



WAYNE STATE
UNIVERSITY





STRONGER THAN EVER



Return to Campus in the Time of Covid

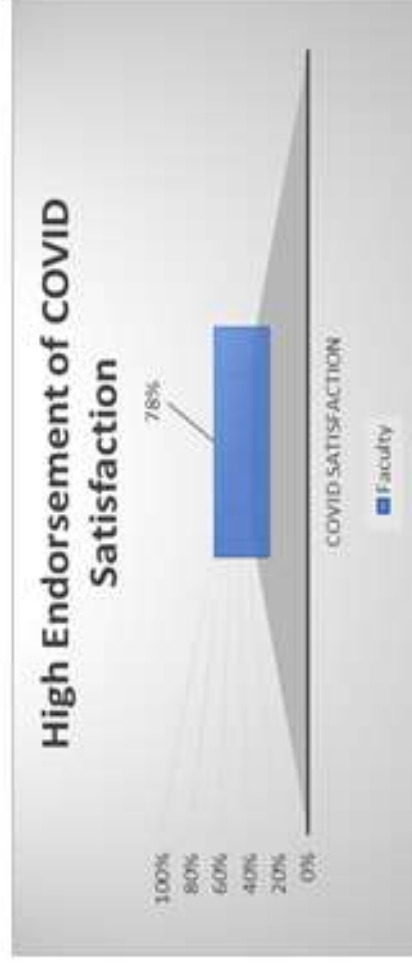
Mark Lawrence Kornbluh, PhD
Provost and Senior Vice President for Academic Affairs

October 1, 2021



Faculty Satisfaction on Wayne's Approach

- NSF GEARS Survey – Purpose to gather climate and perception data on employee experiences at WSU. Collected during Winter 2021 semester – 23% (350 faculty) of all full-time faculty responded
- This survey included COVID satisfaction which is a five-item scale designed to measure an individual's satisfaction with how their organization has responded to COVID. Higher scores represent higher satisfaction. A mean score of 4.31 (on a 5-point scale), and the high endorsement results below, demonstrate that faculty at WSU are very satisfied with the way the pandemic has been handled by the University.



High endorsement reflects an average response of agree to strongly agree (i.e., 78% of faculty either agree or strongly agree)



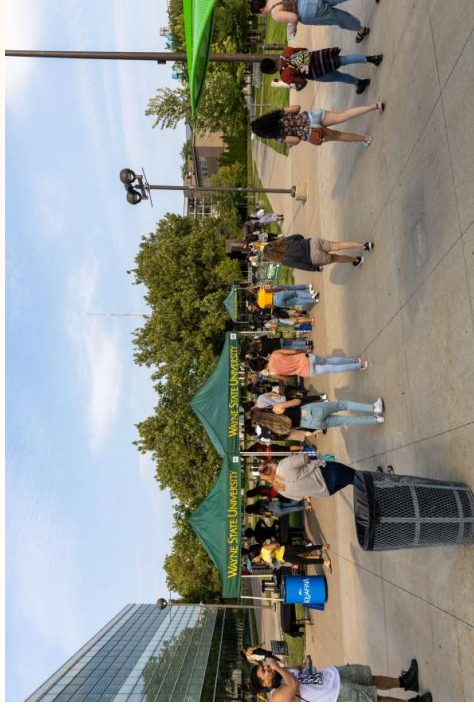
Wayne's Approach to Fall 2021

- Guided by the science and our Health Committee
- Flexibility for individual needs/concerns of both faculty and students
- Maximized in-person where possible
- Serving individual needs

Warrior Return Summer Activities



- Four summer student programming events in July and August
- Partnered with various campus partner resources to get students registered and adjusted to campus
- Engaged with 250+ students through tabling, campus scavenger hunts, and evening programming



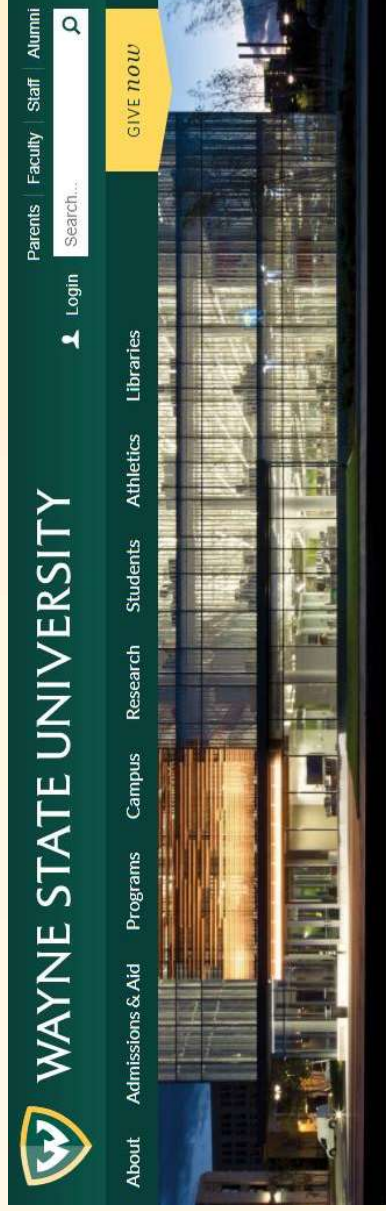
Dramatic Flood Recovery



- Shout out to facilities team
 - Law
 - Nursing
 - Education
 - Art
- No Loss of in-person teaching



Vaccine Mandate Compliance



Students who are registered for in-person learning	90.29%
Faculty who are scheduled to teach in person	95.82
Staff	84.43

Home > Coronavirus: COVID-19 > Vaccine mandate

COVID-19 vaccine mandate

To best protect the health and safety of our campus community, Wayne State will require all students, faculty and staff who plan to be on campus during the fall semester to receive their COVID-19 vaccination. For more information about the vaccine, including a list of frequently asked questions, visit the [Campus Health Center's webpage](#). For information about the fall semester, visit the [fall 2021 webpage](#).

Documentation

[Submit proof of vaccination](#)

Exemptions

Those who have started the vaccination process but are not fully vaccinated should upload their vaccine card to the mandate system. After receiving the email from the submission process noting they are not compliant,

Recent updates

Fall 2021

Vaccine mandate

Health and safety guidelines

Summer Warrior vaccine incentive

Student services

Campus operations

Campus messages

Restart committee



Fall Housing Move In

- Fall campus housing move in was successfully held over four days, August 26-29, 2021 with individual days focused on learning community residents, first year students, and upperclass returning residents.
- 2,362 residents (66% of capacity) have moved into campus housing as of September 1, 2021, living in six residence halls and apartment buildings. (Atchison Hall is closed for the 2021-22 academic year.)
- The newly renovated Chatsworth Suites opened as the home of the new First Year Residential Experience (FYRE). FYRE will provide in-hall programs and supports for the 170 freshmen living in this LLC from many campus partners including student success center, financial aid, academic advising, international education, etc.



Orientation (NSC & FestiFall)

- 50+ Warrior Return Guide volunteers
- 800+ students attended the keynote at Warrior UpRoar
- 250+ students attend the outdoor movie night
- 1,500+ students and family members at New Student Convocation
- 3,000+ attendees at FestiFall
- 250+ Registered Student Organizations, departments, and other campus resources tabled at FestiFall





Course Mix for Fall 2021

Instructional Method	# Sections	% of Total Sections	# Capped Sections	% Capped by IM	SCH
Hybrid	397	6.9%	94	23.7%	21166
Individually Arranged Sections	1750	30.5%	37	2.1%	10514.5
Online - No Scheduled Meetings	1005	17.5%	554	55.1%	85355
Online - Scheduled Meetings	845	14.7%	288	34.1%	56750
Traditional - Face to Face	1746	30.4%	496	28.4%	92791.5
Grand Total	5743	100.0%	1469	25.6%	266577



Lessons Learned from Remote Teaching

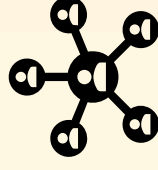
Faculty have found that many of the strategies that make online courses successful are also applicable face-to-face. Regardless of the format they are teaching this fall, these characteristics are key:



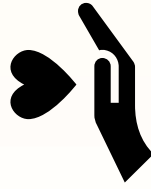
Communicative



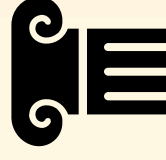
Centered



Connected



Compassionate



Consistent



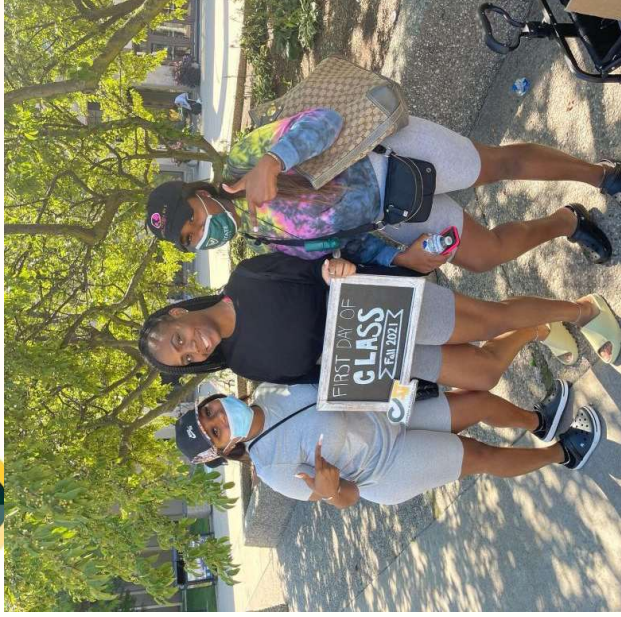
Fall Faculty and Student IT Support

- Staffed support tables at building entrances – mask distribution, questions
- 2,500 noise canceling headphones distributed
- 3,500 webcams distributed
- 206 new laptops to Pell-Eligible students
- Staff walkthrough of all classrooms – facility and technology checks





First Week of Class



- Engaged with 200+ students for “First Day of Class” photos
- 25+ Warrior Return Guides volunteered at five locations across campus to aid students in finding their classes



Transfer Student Success and Satellite Campuses

- 1,300+ new transfer students for Fall 2021
- 800+ enrolled at Advanced Technology Education Center-ATEC (Warren, MI)
- 300+ enrolled at Schoolcraft Center (Livonia, MI)
- 50+ in-person classes at ATEC and Schoolcraft Center
- New Transfer Student Club
- TSSC Transfer Student Lounge Open (UGL)



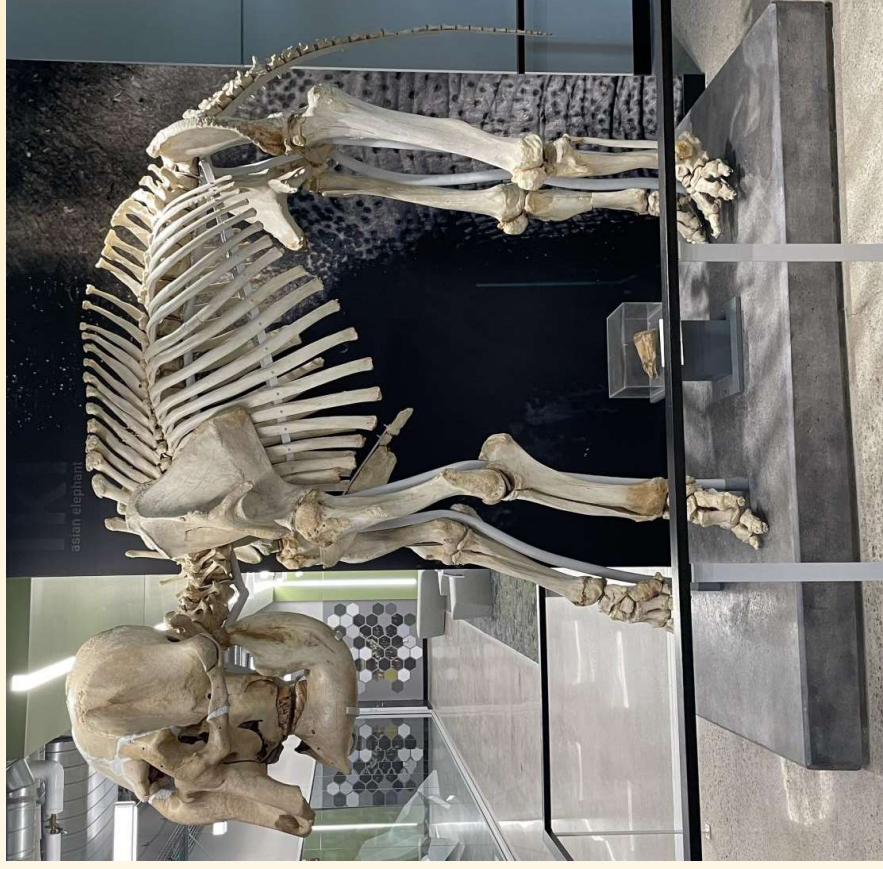


International Students

- Welcome back event September 24.
- Picnic on Gullen Mall celebrating and welcoming international students.
- Pictures and summary forthcoming



New STEM Teaching Building Commissioned





More Data & Upcoming Programming

- Currently over 400 active Registered Student Organizations.
- Introduction of the Warrior Wardrobe adjacent to The W Food Pantry. The Warrior Wardrobe provides casual and dress clothing, as well as household items for no charge to all currently enrolled WSU students.
- The Campus Activities Team (CAT) Week tradition returned the week of September 7, with many events, concluding with over 400 students at the Friday night September 10 Block Party on Gullen Mall
- Student Organizations Day was held on September 15.
- Homecoming takes place next week, with annual activities including the recognition of the Homecoming Court.

Students are continuing to perform well despite the pandemic.



Preliminary 6-Year Graduation Rates*

	2021	One year ago	10 years ago
Overall	55.2%	51.9%	26.0%
Black Students	34.0%	24.8%	7.4%
Hispanic/Latinx Students	37.1%	35.2%	14.8%
First Gen Students	42.9%	42.0%	18.4%
Low Income Students	45.7%	44.1%	16.0%

**Final graduation rates are not yet available. Official graduation rates will be at least as high as the preliminary rates.*



U.S. News, 2022 Rankings

released September 13, 2021

WSU
#1
in Michigan

Top Performers on Social Mobility Ranking

(top 200 institutions)

	2022	2021	2020
Wayne State	66	103	125
Central MI	143	144	176
Eastern MI	82	119	unranked
UofM, Flint	153	154	unranked
Western MI	139	106	78

Note: Michigan peer institutions ranked outside of the top 200 are not listed.



BSN program #43 of
700

Top 7% of
undergraduate
nursing programs in
the country



M.S.N. Program

#34 in U.S.; #2 in MI

(up 36 places from 2017)



D.N.P. Program

#44 in U.S.; #2 in MI

(up 18 places from 2017)



WAYNE STATE
College of Nursing