

Building an Inclusive Campus: Better Supporting our Diverse Student Body

Provost Mark Kornbluh
Vice President Ahmad Ezzeddine
Associate Provost Marquita Chamblee



DEI in Our Mission



Key Elements of Our Strategy

1. Support diverse cultural expressions
2. Support intercultural understanding and communication
3. Support inclusiveness and belonging
4. Engage faculty: link curricular and extra-curricular



The Office of Multicultural Student Engagement: A Model for Supporting Diverse Students from Pre-College through Commencement and Beyond



OMSE Vision and Mission

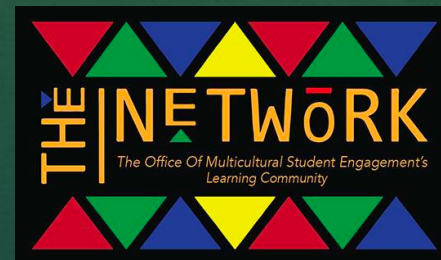
Vision: The Office of Multicultural Student Engagement (OMSE) seeks to cultivate a safe campus environment where we value, promote, and celebrate identities among all student who engage with our office, while intentionally offering initiatives that positively address and impact retention and graduation rates of students that arrive at WSU underrepresented and at risk.

Mission: OMSE collaborates across the campus and community to provide a safe, student-centered space that develops diverse student leaders who thrive socially and academically through advocacy, mentorship, and belonging.

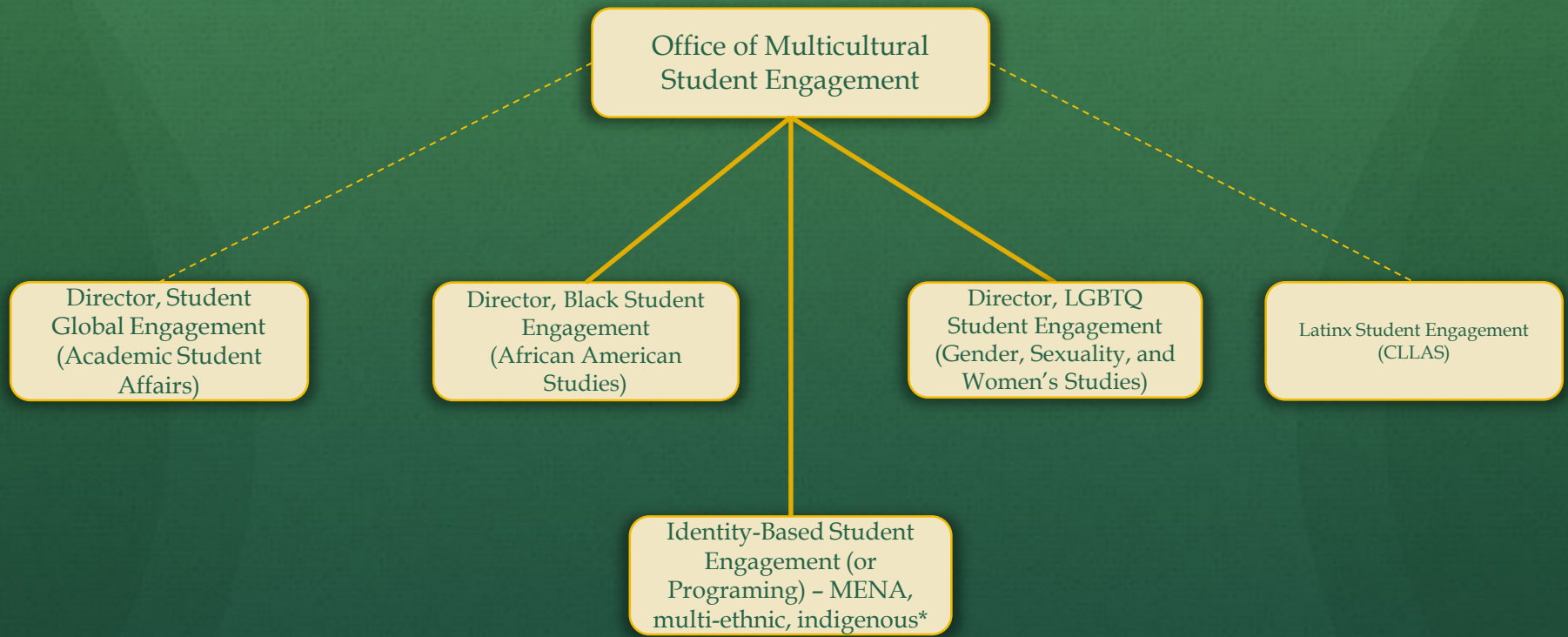


OMSE Core Areas of Focus

- ❖ **Cultural and Identity-Based Programming:** OMSE strives to foster a campus environment where all identities feel respected, celebrated, and seen by hosting regular educational programming.
- ❖ **Workshops and Trainings:** In addition to providing educational programming, OMSE developed a growing portfolio of workshops and trainings for students and student leaders to promote their growth as culturally-competent leaders.
- ❖ **Retention-Focused Learning Communities:** OMSE works to address retention challenges for historically excluded populations through two learning communities — RISE (for self-identified women of color) and The Network (for self-identified African American men) and contributes to university-wide retention initiatives through Student Success.



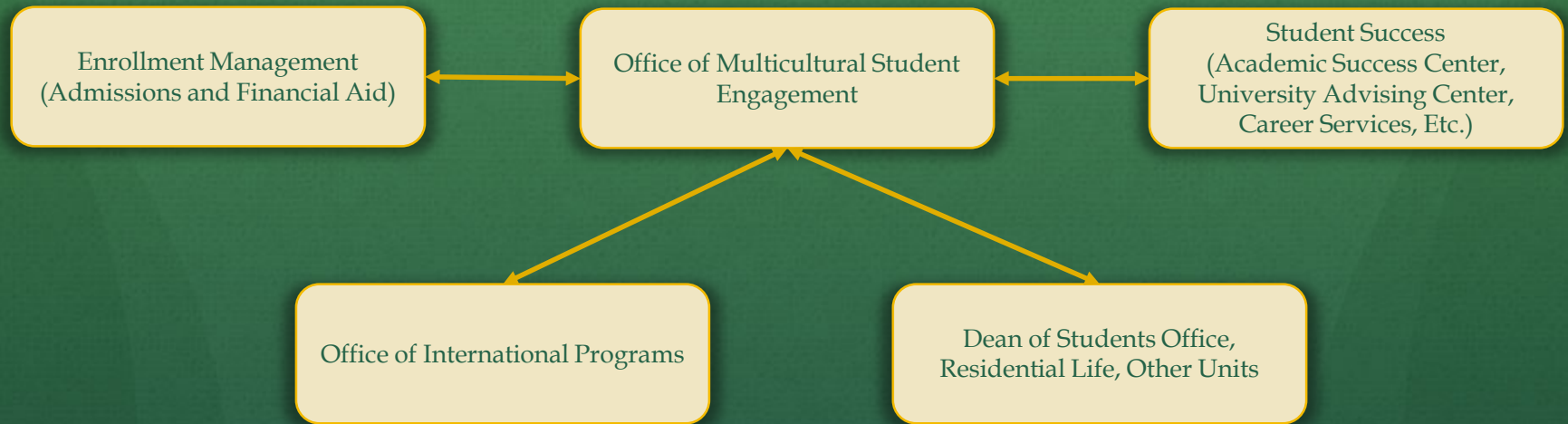
Expansion of Programming Under OMSE



* Ongoing programming



OMSE Collaboration with Academic Student Affairs



OMSE Senior Director will meet regularly with Directors in Enrollment Management, International Programs, and Student Success to enhance the recruitment, retention, graduation, and career success of historically marginalized students.



OMSE Collaboration with Faculty and Academics

