

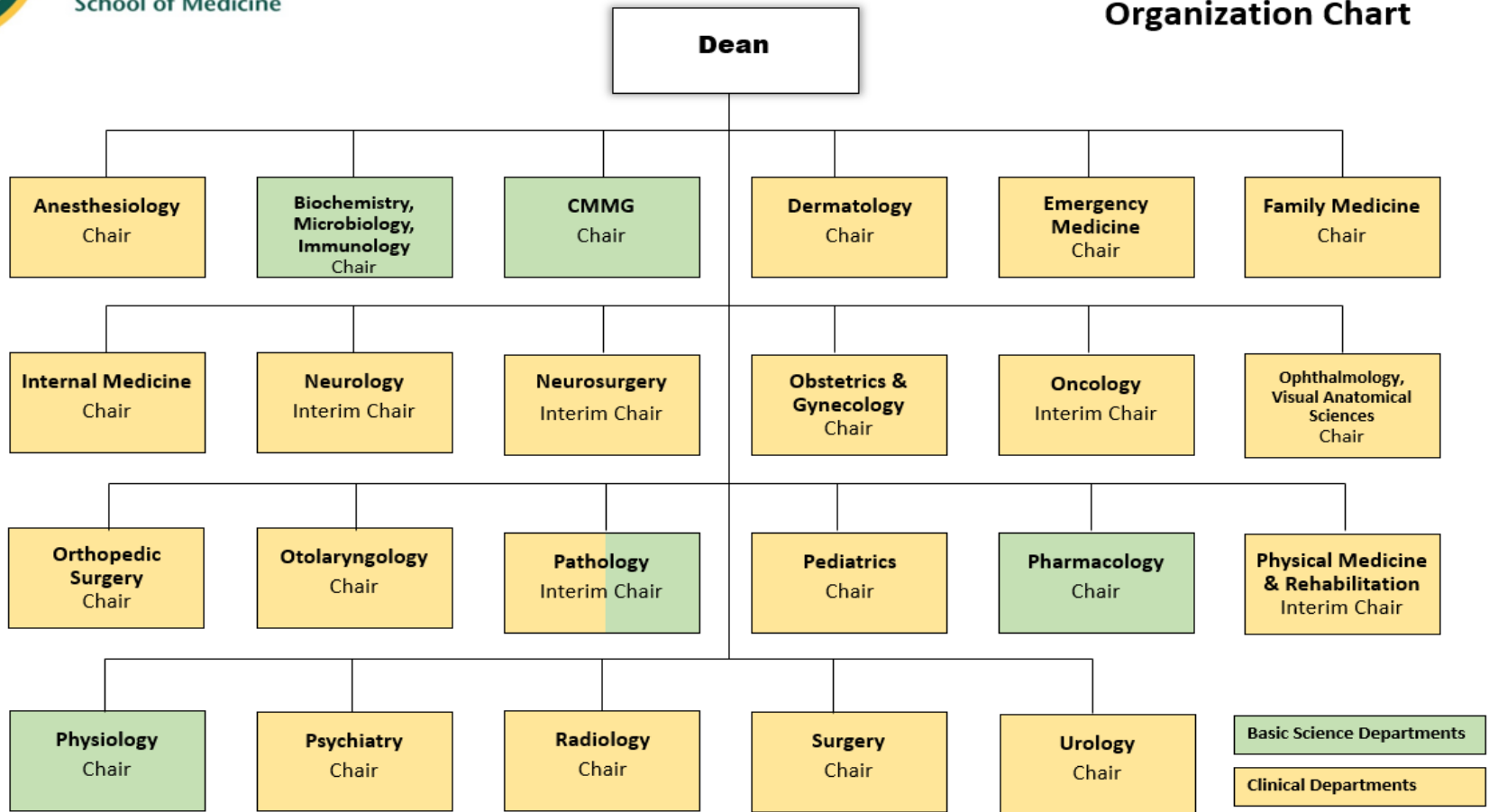
# Wayne State University School of Medicine

- The Detroit Medical College, established in 1868, became the nucleus of Wayne State University and the Wayne State University School of Medicine. Over the 155 years of its history, the school continues to offer seminal contributions to medical education for generations of M.D.s, Ph.D.s, M.D./ Ph.D.s and students in Master's Programs. That is in addition to being a leader in biomedical and community-based research as well as a key participant in training thousands of medical residents and fellows.
- Among the seven medical schools in the state of Michigan, the WSUSOM takes a special pride in being the school that provides the state with the largest number of practicing physicians.





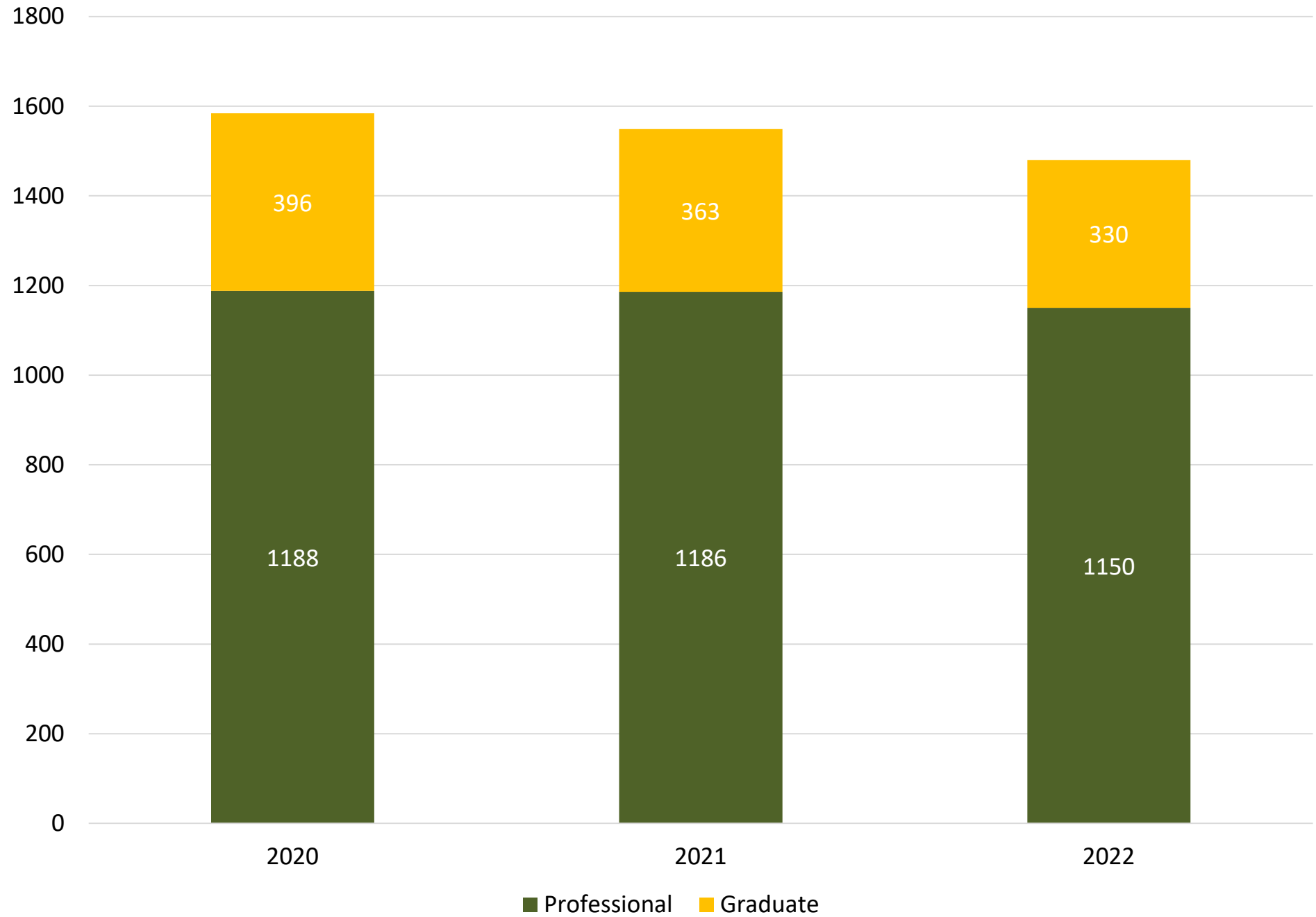
**SOM Departments  
Organization Chart**



Updated: 03/07/2023



# SOM Enrollment by Student Level



## *URM Admissions Update*

- **2011:** Total 18 URMs
- **2012:** Total 16 URMs
- **2013:** Total 18 URMs
- **2014:** Total 7 URMS
- **2015:** Total 15 URMs

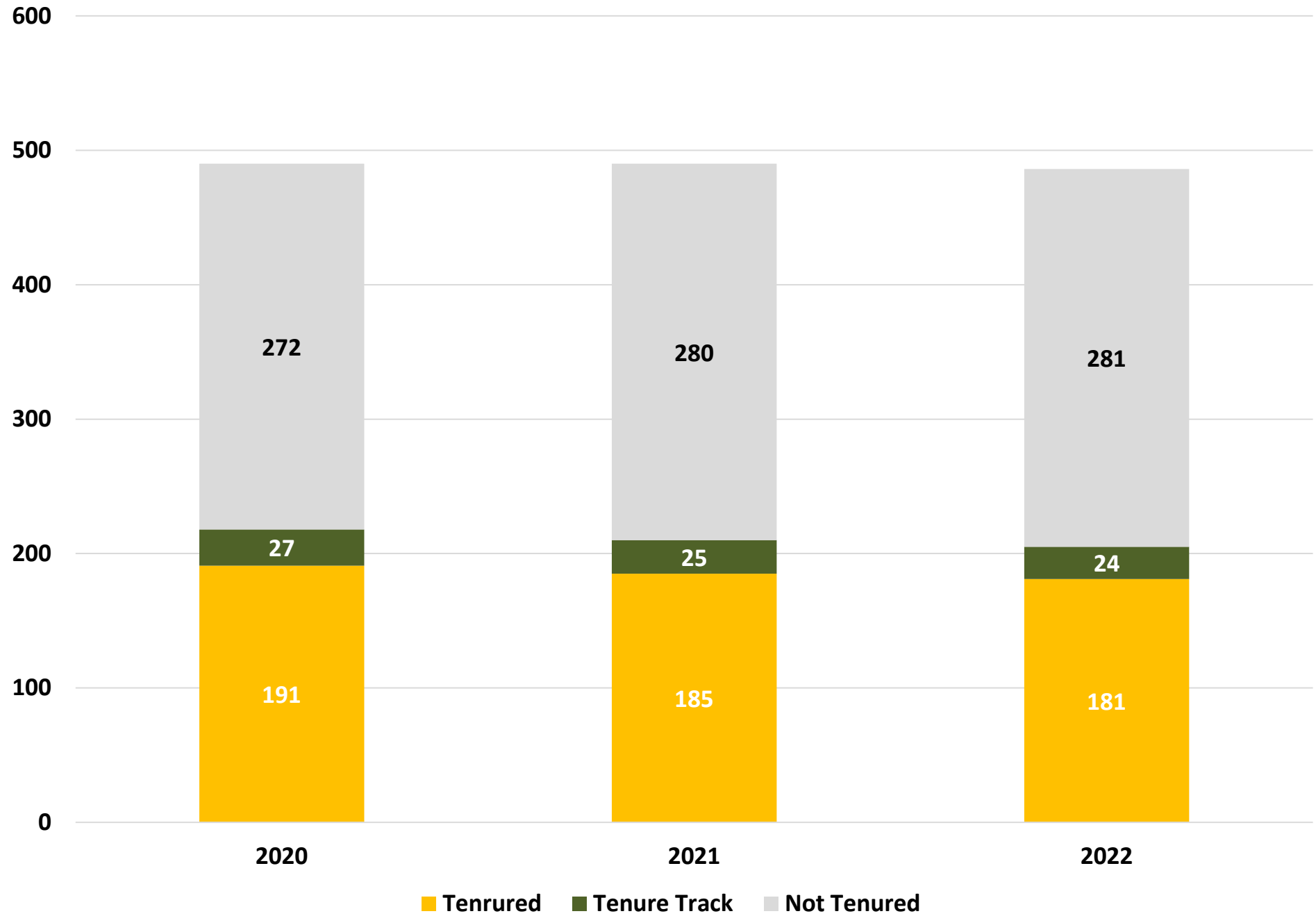
---

- **2016:** Total 61 URMs
- **2017:** Total 63 URMs
- **2018:** Total 60 URMs
- **2019:** Total 69 URMs
- **2020:** Total 61 URMs
- **2021:** Total 69 URMs

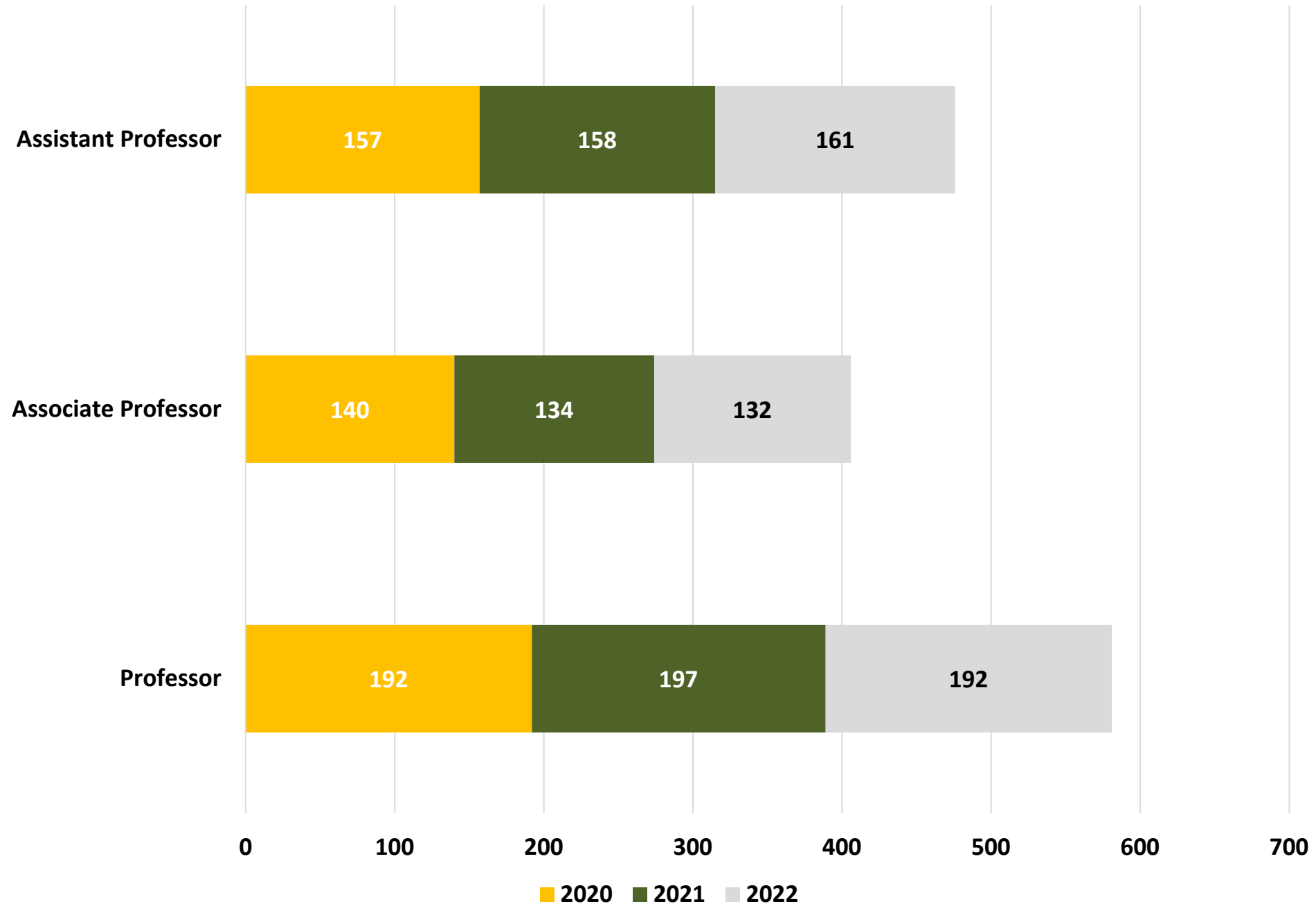
(Intervention Year April 2015)



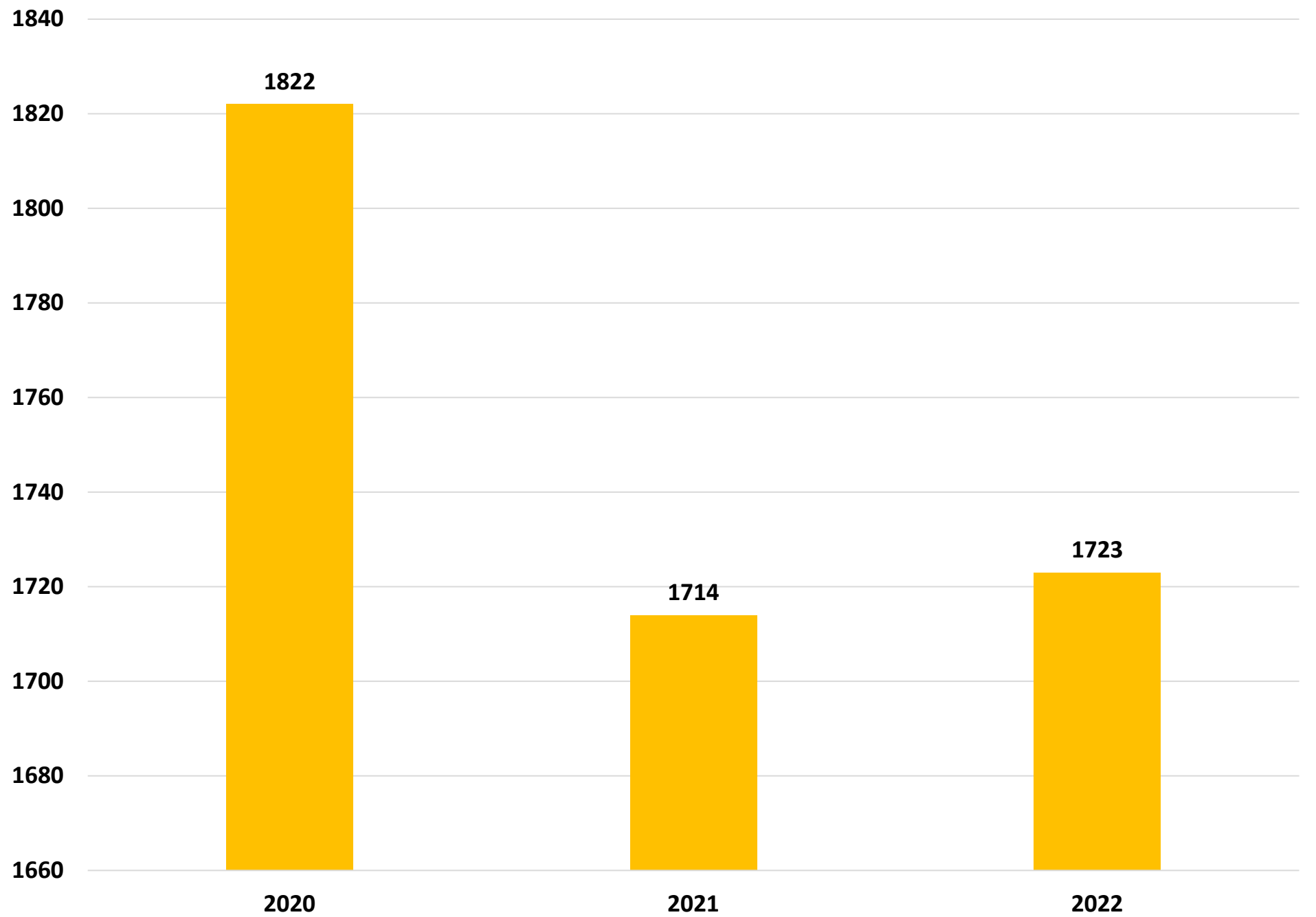
# SOM Full Time Faculty



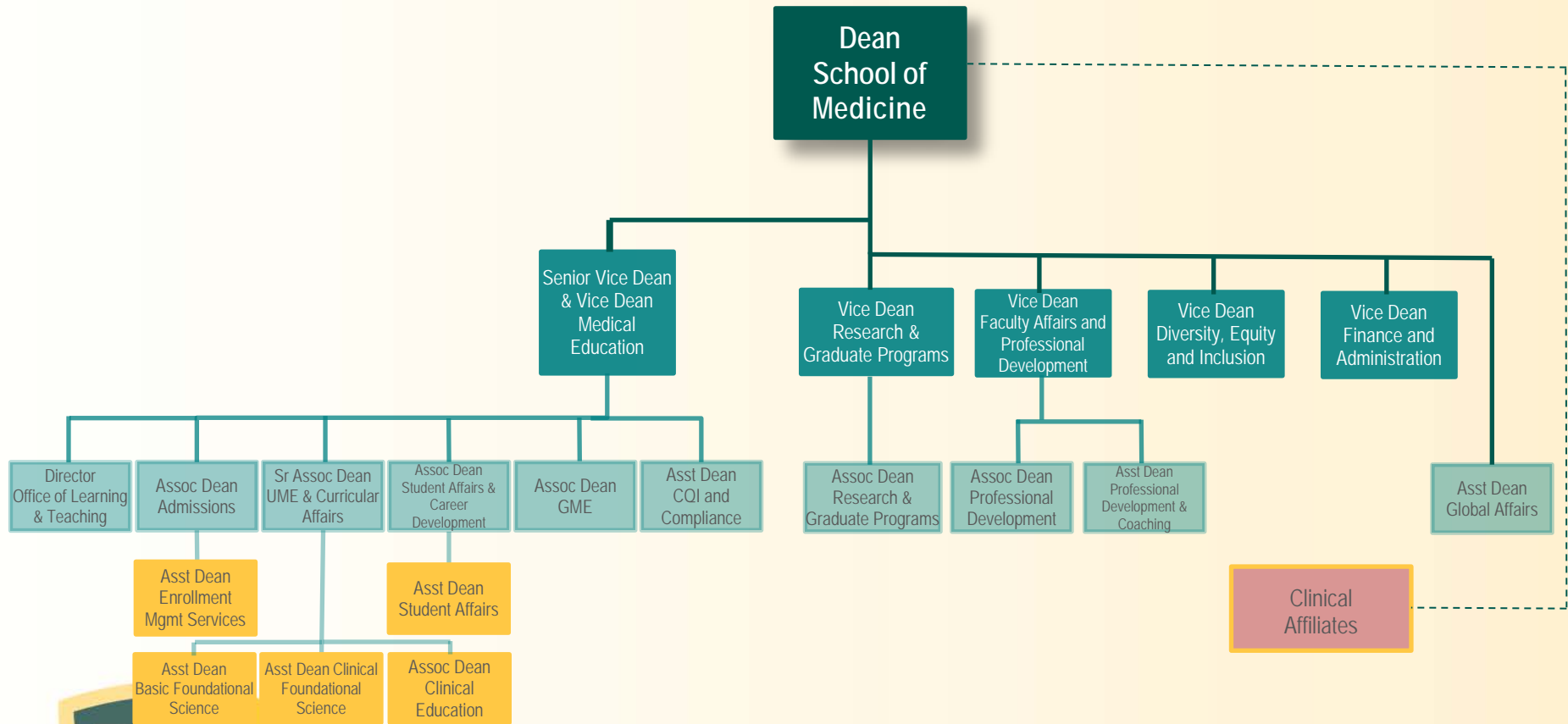
# SOM Full Time Faculty bt Rank



# SOM Employees



# Office of the Dean



Revised: 2/27/23





# WSUSOM Research

- WSUSOM generates ~ \$----- million annually in research funding. Historical and current breakthroughs mark the journey of the school including the first use of a mechanical heart pump in open-heart surgery and the discovery of AZT as a treatment for AIDS.
- For the past three decades, the university and the SOM have been selected by NIH's National Institute of Child Health and Human Development to be the sole institution in the country to house its Perinatology Research Branch (PRB). This unique intramural program is devoted to research, education and collaborations to address the morbidity, mortality and racial/ethnic disparities for pregnant mothers and infants. More than 800 publications reporting original data and novel findings have been published by WSUSOM and PRB investigators representing the largest body of the world literature in this critical field. The university will continue to house, maintain and utilize the largest perinatal biobank repositories, further opening the potential for the scientific community at large for new and impactful discoveries.
- Three departments – the Department of Emergency Medicine; the Department of Ophthalmology, Visual and Anatomical Sciences; and the Department of Family Medicine and Public Health Sciences – are among the nation's top 20 departments in NIH grant funding. The Department of Emergency Medicine ranks in the nation's top 10.



# Examples of recent awards

- **December 2022** - Wayne State University was recently awarded a \$2 million grant from the National Institutes of Health that will be used toward purchasing a 3T PRISMA scanner for neuroscience research. Wayne State's Office of the Vice President for Research and School of Medicine will match an additional \$1.2 million to purchase the equipment.
- **January 2023** - A Wayne State University School of Medicine researcher has received a \$1.7 million, five-year award from the National Institute on Deafness and Other Communication Disorders of the National Institutes of Health for the study, "Targeting nitrate stress for treatment of cisplatin ototoxicity." The research aims to address the critical gap that exists in understanding how nitrate stress caused by cisplatin treatment alters cochlear protein signaling causing apoptosis – or death of cells – in cisplatin-induced ototoxicity.



# WSUSOM Community Engagement

Over 500 medical students annually serve at more than 70 clinical and 100 outreach locations and across numerous programs with faculty leadership. (Street Medicine program continues to win the first prize nationally).

**January 2023** - CVS Health is funding a new initiative to address barriers to care in underserved communities across the country. The CVS Health Community Equity Alliance is being established to expand the community health worker workforce, enhance connections between health care institutions and communities and address disparities in heart health and mental health outcomes. The alliance is part of the company's commitment to advancing health equity.



# Pillars of the WSUSOM Strategic Plan

- Provide transformative medical education
- Ensure a diverse and inclusive culture and community
- Enhance our leadership in basic, applied and community research
- plan to be a national model for excellence in urban health Care
- and social accountability
- Work on achieving financial sustainability
- Become a high-performing organization

